

# STONESTHROW DIRECTORY



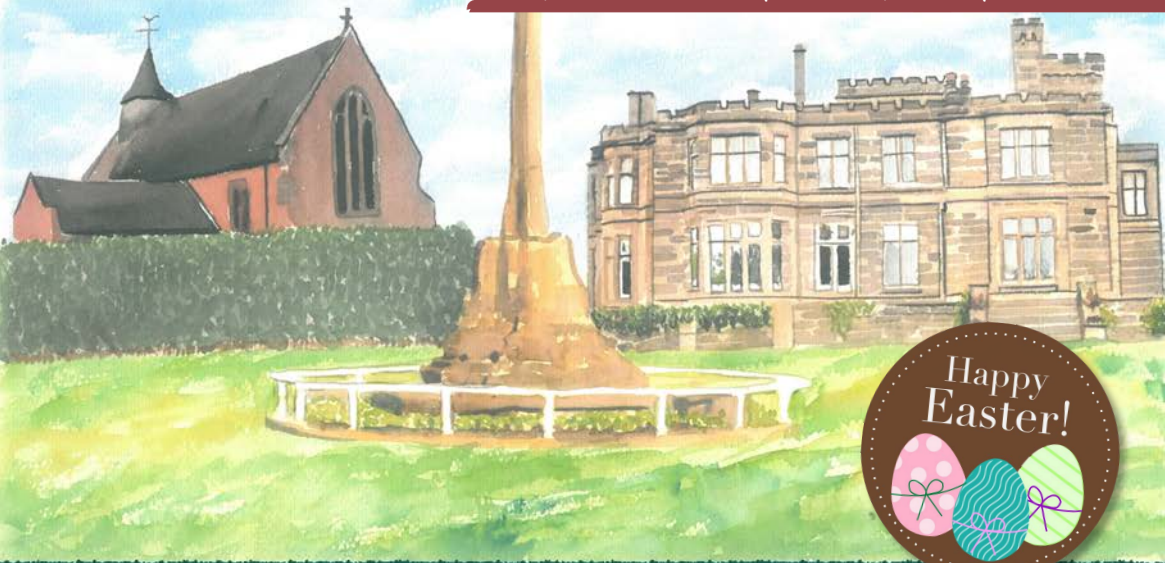
FREE BEE-FRIENDLY FLOWER SEEDS P.26

THE DIFFERENCE BETWEEN CARE & NURSING HOMES P.8

USEFUL LOCAL TELEPHONE NUMBERS / ARTICLES / HOROSCOPES

WHAT'S ON / LOCAL RESTAURANTS & TAKEAWAYS

CHARLES III: LONG LIVE THE KING! P.32



BALSALL COMMON MERIDEN  
HAMPTON IN ARDEN MILLISONS WOOD

APRIL / MAY 2023

JAMIESON CHRISTIE  
WEALTH MANAGEMENT



Pension  
TRANSFER  
Gold Standard

SEE  
BACK PAGE  
FOR MORE  
DETAILS

INVESTMENTS, PENSIONS, TAX PLANNING

ESTATE and IHT PLANNING, EDUCATIONAL FEES, EMPLOYEE BENEFITS

• DRIVEWAYS • PATIOS • ROOFS • GUTTERS • FASCIA & SOFFITS



# External Cleaning Specialists

We provide patio, decking, path and driveway cleaning, as well as roof, gutter, fascia and soffit cleaning in Solihull, Balsall Common, Kenilworth, Hampton in Arden, Meriden and the surrounding areas.

You'll see the difference for yourself when you work with Solclean to clean the exterior of your home or business.



0121 369 0070  
07546 264164

✉ [enquiries@solclean.co.uk](mailto:enquiries@solclean.co.uk)  
🌐 [www.solclean.co.uk](http://www.solclean.co.uk)



VIEW SOLCLEAN ONLINE





**Aquarius Interiors Ltd**

**CURTAINS AND BLINDS**

20% off New Formosa  
Motorised Luxaflex  
Awinings when  
ordered before the  
31st May 2023

*Special offer  
for all  
Stonesthrow  
readers*



**53, Abbey End, Kenilworth CV8 1QJ.**

**Tel: 01926 359096**

**Russells Garden Centre, Mill Hill,**

**Baginton, Coventry CV8 3AG.**

**Tel: 024 7771 7517**

# A NOTE FROM THE EDITOR

Hello and welcome to our April/May edition of the Stonesthrow Directory.

Fingers crossed for some good weather over the Easter weekend, which is relatively early this year: Friday 7th to Monday 9th. But why does Easter, like the proverbial bunny, hop around so much? In a nutshell (or should that be an Easter eggshell?), it's because Easter falls on the first Sunday following the full moon on or after the spring equinox, which is assumed to be 21st March (even though that itself can vary between 19th and 22nd March).

May is Local and Community History Month, which is designed to increase awareness of local history. Since our local communities are so important to us as a business, we need no further prompting to get out and about and explore the history of our area. You can find more information at [history.org.uk](http://history.org.uk).

There are plenty of special offers and discounts exclusive to our readers in this edition. Please remember to mention Stonesthrow Directories when calling our advertisers, so we can bring even more trusted local services to your door. We strive to support local businesses, so if you or someone you know runs a small business in or near Balsall Common - please do get in touch for a friendly chat about how we can connect you to thousands of potential clients on your doorstep.

As always, we have prepared a list of local news and events (see p.24-25), a couple of good read articles, listings of your local restaurants & takeaways, useful local telephone numbers: it's all in one handy guide, brought to you by a local resident.

Here are the dates for your calendar:  
**7<sup>th</sup> of April - Good Friday Bank Holiday;**  
**10<sup>th</sup> of April - Easter Monday Bank Holiday;**  
**1st of May - Early May Bank Holiday;**  
**6<sup>th</sup> of May - Bank Holiday for the Coronation of King Charles III;**  
**29<sup>th</sup> of May - Spring Bank Holiday.**

However you spend the next couple of months, keep your heart and your business local.

Yours, Stonesthrow Publications.  
 01926 8000 84 / 075 111 222 45  
[INFO@STONESTHROWPUBLICATIONS.CO.UK](mailto:INFO@STONESTHROWPUBLICATIONS.CO.UK)  
[WWW.STONESTHROWPUBLICATIONS.CO.UK](http://WWW.STONESTHROWPUBLICATIONS.CO.UK)

# CONTENTS IN THIS ISSUE



32  
CHARLES III: LONG LIVE THE KING!



29  
USEFUL LOCAL TELEPHONE NUMBERS



THE DIFFERENCE BETWEEN CARE & NURSING HOMES  
8



28  
LOCAL RESTAURANTS & TAKEAWAYS



30  
HOROSCOPES



WHAT'S ON LOCALLY  
24-25



We gratefully acknowledge the support of businesses and organisations, whose adverts or information appear in Stonesthrow Publications Ltd. Whilst every effort is taken to ensure the accuracy, we can not accept responsibility for loss, damage or omission caused by error in the printing of an advert or an article. Nor can we accept responsibility for claims made by advertisers/contributors, or services, provided by the advertisers. It is the responsibility of the advertiser to make sure, that the information they provide is correct and up to date at the time of the publication. No part of this directory can be reproduced, copied or stored without the prior written permission of the Stonesthrow Publications Ltd. The use of this magazine for direct marketing or canvassing is strictly prohibited. Distribution area and day may vary at the discretion of the publishers. All artwork, pictures and text are accepted on the basis, that permission for their use in the publication has been obtained by the advertiser or contributor. Stonesthrow Publications Ltd can not accept responsibility for alterations or changes of details after the publication date. **Stonesthrow Publications Ltd**





# Prior Products Limited

WINDOWS • DOORS • CONSERVATORIES • BI-FOLD DOORS • ROOFLINE



- ◆ Manufacturers & Installers of PVCu Windows, Doors and Conservatories
- ◆ A variety of Colours available
- ◆ Warmer Roof Tiled Conservatories
- ◆ Lantern Roofs & Rubber Roofs
- ◆ Garage Doors
- ◆ Aluminium & Timber Windows also available
- ◆ Trade Frames (supply only) available



**CERTASS**



Clearly the most energy efficient window glass

VISIT OUR SHOWROOM:

Tuesday - Saturday 10:30am - 3pm

at Stratford Garden Centre

Clifford Chambers, Nr Stratford upon Avon CV37 8LW

Call: 01926 422200

Or visit: [www.priorproducts.co.uk](http://www.priorproducts.co.uk)

**2 YEAR  
0% FINANCE  
AVAILABLE**  
Subject to conditions

**EXTENDED  
OFFER UP TO  
37.5%  
OFF**

**VALID UNTIL  
END OF APRIL  
ONLY!**

# MORE THAN JUST WINDOWS: HOW YOUR GLAZING CHOICES CAN MAKE A STYLE & EFFICIENCY STATEMENT



If you are looking for inspiration when upgrading your windows and doors, there are plenty of trends to watch out for, especially if it's important to you to keep your home updated with the latest in energy efficient glazing. Here's a list of the current developments that you may want to consider when renovating your home.

## FRAMELESS STRUCTURAL GLAZING

As the name suggests, this is glazing that has no frame. As the glass used is thicker and stronger you do not need framing systems to help support the installation. You get an abundance of natural light which can make the room cosy and comfortable as well as providing a boost to your mental health.

## FLOOR TO CEILING WINDOWS

Having spent more time indoors in the last two years, homeowners are looking for ways to bring the outside in. Floor to ceiling windows are one way to do this, and they are particularly popular in kitchen designs, flooding the space with natural light. Plus with fewer light fixtures needed, the reduced lighting load cuts down on utility bills – and results in valuable savings over time.

## STRUCTURAL GLAZING

Structural glazing is a term used to describe glass that is integral to the design of a building. It involves large glass panels, which usually bear some weight in the structure. Uses can include sliding glass doors, roofs, extensions, entrance ways, canopies, and even the humble window.

## BRIGHT COLOUR FRAMES

We're used to seeing white uPVC window frames, but times have moved on and they now come in any colour you can think of! This gives you great flexibility in personalising your home, perhaps in a

subtle shade which will complement the existing architecture and stay in keeping with surrounding homes, or maybe you'd prefer to make more of a statement!

## GLASS CANOPIES

Glass canopies are an attractive, yet highly practical architectural feature typically located over a building's entrance. Made from toughened glass, these are incredibly durable structures that are more than capable of withstanding heavy rain and a build-up of snow. People choose them because they like having a feature that maintains natural light as well as blending in with other glazed elements of the building.

## SOLAR CONTROL GLASS

With the trend towards big picture windows and more glazing, there's also a need to reduce glare and excessive heat. Solar control glass is one solution. It's a hi-tech product with a metallic coating applied to one side of the pane, which allows sunlight to pass through the window while radiating and reflecting away some of the infrared part of the sunlight itself. This allows the indoor area to stay brighter and cooler than would be the case with plain glass.

## ENERGY EFFICIENCY

The more efficient a window is, the more it will help to keep the heat in your home and save you money on your energy bills. The BFRC (British Fenestration Rating Council) rate the thermal efficiency of windows from A to G, with A being the most efficient. To meet "Energy Saving Recommendation" certification, the windows must be C-rated at the very least.

**About the Author:** Helen Say is a freelance copywriter and blogger [www.cblservices.co.uk](http://www.cblservices.co.uk)



# Misty Gouble Glazing?

Hi My name is Dave Millidge, let me introduce my company where I repair windows and replace misted up Double glazed units.

The area that I cover is Coventry and Warwickshire. You may have seen me around in your street or even have family and friends who I have worked for in the past ten years, with over 6,000 satisfied customers during that period. I started Misty to Clear to give customers the best value repairs in the current climate.

The Misty to Clear website allows total transparency of the customer experience. You can log into the website and view work that I have carried out. You can also leave feedback on social media. Therefore I give a 5 year guarantee on all new double glazed units fitted by Misty to Clear.

This is a genuine guarantee which does not come as an extra to my price.

I started Misty to Clear mindful that the cost of repairs is probably key to most people's budget when using tradesmen to do work on their behalf in their homes.

I offer a lower cost service to both old and new customers as I operate directly for the customer with no additional hidden charges or insurance costs to you the customer.

So my Company name is Misty to Clear where I can offer steamed up window glass replacement and fix broken handles, hinges, seals, window locks and door locks.

I also change glass in Velux windows too.

**Satisfaction guaranteed to be a high standard that carries a 5 year manufacturer backed guarantee.**



**Clearly a great service!**

**Don't replace the Frames ...just the Panes!**

Misted/Failed Double Glazed Units Replaced  
Broken or Damaged Windows?  
Faulty Hinges, Handles or Locks?  
Want the latest energy saving glass?  
5 year guarantee on new double glazing

**MISTY to CLEAR** Window Repair Service

**OVER 25 YEARS EXPERIENCE**

**SATISFACTION GUARANTEED**

Call Dave Millidge

**07704613430**

web:  
[www.mtcwindows.co.uk](http://www.mtcwindows.co.uk)  
email:  
[dave@mtcwindows.co.uk](mailto:dave@mtcwindows.co.uk)

**OAP DISCOUNT**

**Misty To Clear  
Warwick Limited**

# THE DIFFERENCE

## BETWEEN CARE & NURSING HOMES

When the time comes to think about long-term care for a loved one, the term “care home” conjures up different meanings for different people. One of the most frequent questions people ask is whether they need to be considering a “care home” or “nursing home” and the two terms can become interchangeable in most people’s minds.

We can think of a “care home” as being a generic term describing a facility that provides accommodation and personal care for people who need extra support in their daily lives. Personal care might include help with eating, washing, dressing, going to the toilet or taking medication.

Broadly speaking, we can split “care homes” into two separate categories: residential care homes, and nursing homes. Residential care homes and nursing homes do provide similar services but understanding the differences can help you and your family choose which is right for your situation.

**A RESIDENTIAL CARE HOME** is defined as “a small establishment providing accommodation and care for people who are unable to look after themselves.” Care is provided 24-hours a day by trained Care Assistants. Commonly residents are elderly and their need for care is because of degenerative health conditions associated with ageing e.g. reduced mobility. The term “care home”, therefore, broadly covers all types of residential care facility. Some care homes are privately owned – perhaps by private individuals or companies – others are run by local councils.

**A NURSING HOME** is an establishment for people who don’t need to be in a hospital but can’t be cared for at home. In a nursing home, care is provided 24 hours a day by Registered Nurses who are supported by Care Assistants. The services might include administration of intravenous medication, or wound care, or residents may need rehabilitation after a serious injury or debilitating illness. Residents may not necessarily therefore be elderly. Both types of home provide 24-hour support,

however, since nursing homes have registered nurses on site 24 hours a day the cost can be considerably more than the cost of a residential care home.

### WHICH TYPE OF CARE HOME IS RIGHT FOR YOU?

Your choice between a residential care home or nursing home will depend on the level of care your loved one needs. You may already know the answer, but if not, you go for a needs assessment. In England, in accordance with the Care Act, local authorities have an obligation to assess everybody regardless of income, savings or whether the council thinks you will qualify. The assessment will identify your care needs - what kind of care you require and how much support you need. A social worker, occupational therapist, nurse or someone else working on the local authority’s behalf will carry out the assessment. Once the assessment is complete, your local authority will use the information to work out what care and support you may be eligible for and the best way for you to get it.

*About the Author: Helen Say is a freelance copywriter and blogger [www.cb1services.co.uk](http://www.cb1services.co.uk)*







# Homewood, Leamington Spa Residential care home

MHA is a charity with over 75 years' experience providing quality care and supporting families.

**Situated in beautiful grounds, we offer:**

- Long-term and respite care
- Personalised care in a safe environment
- En suite bedrooms and home cooked food
- A chaplain, hair salon and lots of activities

Get in touch for more information

**01926 423519**

**[www.mha.org.uk/homewood](http://www.mha.org.uk/homewood)**



# Lady Katherine Housing & Care



Rated by the Care Quality Commission as:

**GOOD**

**RESIDENTIAL CARE  
SHELTERED HOUSING  
RESPITE CARE**

**~ WE HAVE VACANCIES ~**

**Now taking Spring Respite bookings**

If you would like to pay us a visit or discuss our current availability, contact:

Chris Mundell:

**01564 772415 | 07593 552136**

Temple Balsall, Knowle, Solihull, B93 0AN



Company No. 7890553

[www.leveson.org.uk](http://www.leveson.org.uk)

Registered Charity 1146710

## DISCOVER THE BENEFITS OF AN INDEPENDENT EDUCATION...

Bablake and King Henry VIII School is a co-education day school for 3-18 year olds, which offers pupils and enjoyable and individual experience. Here, we ensure pupils discover their academic, as well as personal, potential in a safe and happy environment.

The School prides itself on providing pupils with a dynamic and challenging learning experience. BKHS pupils are passionate about their co-curricular activities and are well known for trying to fit as many activities in as they can into their busy schedules! The dedication and enjoyment they have for these co-curricular activities leads to fantastic team and individual achievements throughout the school.

At Bablake and King Henry VIII School individuals thrive. The positive school environment fully supports a pupil's individual needs and aspirations, enabling them to become more confident and proud of their individuality.

“It was **refreshing** to visit a school where children are still treated as individuals and their emotional and personal development sits at the heart of all that you do.”  
– **Open Event Visitor**

“We would have no hesitation in recommending the School to others and certainly feel the school has been excellent **‘value for money’**.”  
– **Former Parent**

“You will have the best education, at the best school and the best opportunity for the future. Your time at the school will allow the **‘character’** of the School to sink into your **heart**.”  
– **Former Pupil**



 **BABLAKE & KING HENRY VIII  
PRE PREP**

**OPEN  
MORNING**

**Saturday 24th June  
9am - 12 noon**

*This is the perfect opportunity to  
get a true flavour of our school*

Places available in Nursery, Reception, Year 1 & Year 2  
**The Grange, Brownhill Green Road, Coventry CV6 2EG**  
admissions@bkhs.org.uk | 024 7627 1190



**BOOK NOW**

EAT · DRINK · RELAX  
EVERY MONDAY & TUESDAY  
BOOKING RECOMMENDED



ANY STARTER, ANY MAIN DISH\*, ANY NAAN OR RICE & COFFEE/TEA

**£12.90**<sup>PP</sup>

\*(FISH & KING PRAWNS £3.00 EXTRA PER DISH) \*\* (PLAIN COFFEE)

CUSTOMER SERVICE: WE AIM TO PROVIDE 100% CUSTOMER SATISFACTION. SHOULD YOU EXPERIENCE DIFFICULTIES OVER SERVICE OR FOOD PLEASE DO NOT HESITATE TO INFORM US.

**TAMARINDS**  
CAFE · DINING · LOUNGE

T: 01676 533 308  
WWW.CAFETAMARINDS.CO.UK  
376 KENILWORTH ROAD, BALSALL COMMON,  
COVENTRY, CV7 7ER  
OPEN 7 DAYS A WEEK: 5.00PM - 11.00PM

## DOMESTIC ROOFING AND PROPERTY MAINTENANCE

Local and friendly service, seven days a week

ASK FOR A QUOTE TODAY



### SERVICES INCLUDE:

Gutters, Fascias & Soffits  
Down pipes  
Built-up flat roofing  
Single ply membrane

### WE ALSO OFFER:

Fencing  
Slabbing  
Lock changes  
Water leaks  
Interior decorating

  
**R W McDermott**  
Property Maintenance

T: **07880 748 054**

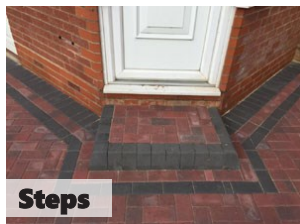
E: [rwmcdermottpropertymaintenance@gmail.com](mailto:rwmcdermottpropertymaintenance@gmail.com)

# Projects

## Paving & Landscaping



- ✓ BLOCK DRIVEWAYS & PAVING
- ✓ RESIN DRIVEWAYS
- ✓ TARMAC DRIVEWAYS
- ✓ LUXURY OUTDOOR PATIOS
- ✓ STEPS TO FRONT DOORS
- ✓ DECORATIVE WALLING
- ✓ LANDSCAPING
- ✓ ASTROTURF
- ✓ FENCING



For a FREE, NO OBLIGATION quotation call:

**T: 01926 674 782 M: 07961 358 367**

**projectspaving@icloud.com**

**www.projectspaving.co.uk**

328 Alcester Road, Wythall, Birmingham B47 6JR



For your FREE quotation please contact  
**React Roofing today!**

- NEW ROOF SPECIALISTS
- FASCIAS, SOFFITS & GUTTERING
- FLAT ROOF SPECIALISTS
- GRP FIBRE GLASS ROOFING
- LEAD WORK
- CHIMNEY REPAIRS & BUILDS



ALL WORK  
GUARANTEED

**T: 01564 336 894**

**M: 07922 230 477**

[www.reactroofingservices.co.uk](http://www.reactroofingservices.co.uk)  
Based in Solihull

Email: [reactroofingservices@gmail.com](mailto:reactroofingservices@gmail.com) Please mention Stonestrow Directory when calling

# DOVEHOUSE LAUNDRETTE

**SERVICE WASHES**  
**WASHER & DRYER**  
**FULL IRONING SERVICE**



**0121 7113075**

[www.dovehouselaundretteservices.co.uk](http://www.dovehouselaundretteservices.co.uk)

**369 Warwick Road, Solihull B91 1BQ**

Mon-Fri: 8.30am - 5.30pm; Saturday: 9.00am - 5.30pm

## IS YOUR SOFA LOOKING TIRED & SHABBY? CANNOT AFFORD TO BUY BRAND NEW?

*Complete upholstery & re-upholstery services for  
traditional & contemporary pieces in fabric & leather*

### **SPECIALIST LEATHER REPAIR:**

*Professional cleaning & stain removal  
Scuffs, cat scratches, burns  
Colour loss restored  
Panel replacement  
Aniline restoration  
Large range of fabric & leather*

### **UPHOLSTERY:**

*New seat cushions  
New springs / webbings  
Frame repairs  
Free inspection  
All work guaranteed*



*Before*

## Mark Miller

### **Leather Cleaning & Repair**

**Undertake Commercial & Domestic Upholstery**

**01455 612730 / 07949 606949**

**[www.leathercleaningandrepair.co.uk](http://www.leathercleaningandrepair.co.uk)**



*After*



### **C. Stevens Roofing**

*The regions  
Premier Roofing Company*

*A family business with over  
50 years experience*

- New Roofs
- Flat Roofs
- Leadwork
- Chimneys
- Re-Pointing
- Small Repairs
- UPVC Facias
- Guttering

**01676 535290**

**[www.cstevensroofing.co.uk](http://www.cstevensroofing.co.uk)**

## **FAIRWAYS**

**LAWNMOWER & GARDEN  
MACHINERY REPAIR & SERVICE**

**LAWNMOWER & GARDEN  
MACHINERY SALES**

**BLADE SHARPENING**

**CYLINDER REGRIND**

Umberslade Business Centre  
Pound House Lane, Hockley Heath,  
Solihull B94 5DF

**01564 773614**

**[sales@fairwayslimited.co.uk](mailto:sales@fairwayslimited.co.uk)**  
**[www.fairwayslimited.co.uk](http://www.fairwayslimited.co.uk)**

# Ben the

# PC+Doctor

## First to Aid All Your PC Problems

Call Solihull's Original PC Doctor Now!

Software,  
Hardware,  
Network,  
Internet,  
Virus Problems  
& Concerns?

- + FREE Call Out
- + FREE Advice
- + We Come To You
- + No Hidden Extras
- + Low Rates
- + Lines Open 24/7
- + Rated 29/30 in Customer Service Reviews

Local Line 0121 704 2134

The New Look PC Doctor,  
Same Great Service -  
Read Our Reviews on Google!



# Xtreme Tree Care

- Crown Thinning and Reduction
- Felling and Dismantling
- Pruning and Shaping
- Hedge Trimming and Removal
- Specialist Stump Removal
- Logs and wood chip for sale

Fully Insured  
All Staff Fully Qualified  
20 Years Experience

For a free quotation from your  
Local Tree Surgeon call  
07951 332 401

Highcroft, Ossetts Hole Lane, Claverdon, Warwickshire CV35 8HN

[xtremetreecare@aol.co.uk](mailto:xtremetreecare@aol.co.uk)





# Window & Door Repairs & New Installations



**GREAT SERVICE &  
QUALITY WORKMANSHIP  
GUARANTEED**

- Misted/Steamed Up Windows
- Broken Glazing
- Broken Hinges, Handles & Locks
- Poorly Fitting Windows & Doors
- Locks Fixed
- New Windows & Doors

**(UPVC ~ Aluminium ~ Timber ~ Composite)**



Call Paul at HomeSeal today for your  
**FREE NO OBLIGATION QUOTATION:**

Tel: **024 7646 6260**

Mob: **07976 710463**

[www.homesealimprovementsltd.co.uk](http://www.homesealimprovementsltd.co.uk)



**S&S BUILDING  
& ROOFING**

- ✓ Fully insured
- ✓ Guaranteed
- ✓ Family run
- ✓ Local

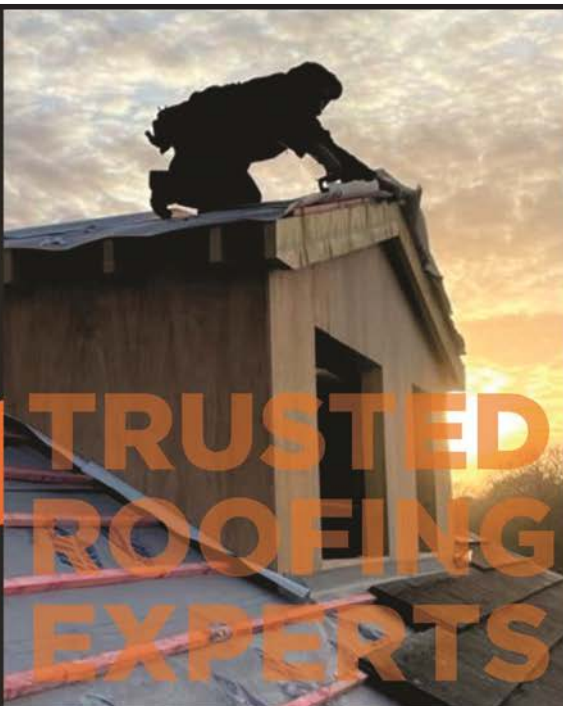
**Payment only upon  
satisfactory completion  
of work**



**Checkatrade**  
Where reputation matters



Search us on  
**Google**



- All aspects of roofing work undertaken
- Trained & qualified tradespeople
- Professional management team
- Excellent customer care
- A wealth of construction experience
- Industry accredited

**10 YEAR GUARANTEE**

\*Insurance backed guarantee available



**TRUSTMARK**  
Government Endorsed Quality



Contact a member of our  
team today on:

T: **0121 809 5502**

T: **0800 433 2288**

M: **07541 936 357**

E: **bks@ssbuildingandroofing.co.uk**

W: **www.ssbuildingandroofing.co.uk**



## CONSERVATORY ROOF REPLACEMENT

Every Ensign conservatory roof is bespoke. Accurately surveyed and precision built in our own factory.

- Large range of lightweight tile colours
- U-value 0.18 is better than current building regulations
- Keylite Roof Windows
- Electrics & Plaster Finish

## BUILD CONSERVATORY & ORANGERY EXTENSIONS

- Cost effective extensions
- Large range of designs
- LABC Approval Undertaken
- Average build time 4 weeks

## REPLACEMENT WINDOWS AND DOORS USING PROFILE 22 SYSTEMS

- Aluminium bi-fold doors
- Composite Doors
- Profile 22 Optima Systems
- Planitherm Technology
- Sealed Units for maximum efficiency
- High security locking systems



CALL TODAY TO BOOK YOUR **FREE**  
NO OBLIGATION SITE SURVEY  
**01527 69296**

[www.ensignroof.co.uk](http://www.ensignroof.co.uk)



Proud members of  
**Checkatrade.com**  
Where reputation matters

**FENSA**  
Registered Company



# Aquarius Interiors Ltd

## Warwickshire's No.1 for Shutters and Awnings.



Russells Garden Centre, Mill Hill, Baginton, Coventry CV8 3AG. Tel: 024 7771 7517  
53, Abbey End, Kenilworth CV8 1QJ. Tel: 01926 359096

[www.aquariusinteriors.co.uk](http://www.aquariusinteriors.co.uk)



## BEN TEBBY

TREE & LANDSCAPING SERVICES

### TREE SERVICES

Tree Felling & Dismantling  
Crown Reduction & Thinning  
Pruning & Shaping  
Hedge and Shrub Trimming  
Stump Removal  
Logs & Wood Chipping for Sale  
Site & Garden Clearances

### LANDSCAPING

Patios, Fencing & Turfing  
All aspects of landscaping

NPTC and City & Guilds qualified  
Fully Insured (5 million public liability)  
Friendly and reliable services



07581 094528

[bentebby@hotmail.com](mailto:bentebby@hotmail.com)



## S&S

## Building & Roofing

- NEW ROOFS
- GUTTER CLEANING
- SMALL & LARGE ROOF REPAIRS
- UPVC FASCIA & GUTTERING REPLACEMENT
- BUILDING PROJECTS
- EMERGENCY REPAIR WORK



- FLAT ROOFS
- LEAD WORK



T: 0800 433 2288 / 0121 809 5502

M: 07541 936357

E: [bks@ssbuildingandroofng.co.uk](mailto:bks@ssbuildingandroofng.co.uk)

W: [www.ssbuildingandroofng.co.uk](http://www.ssbuildingandroofng.co.uk)

EAT · DRINK · RELAX  
 EVERY MONDAY & TUESDAY  
 BOOKING RECOMMENDED



ANY STARTER, ANY MAIN DISH\*, ANY NAAN OR RICE & COFFEE/TEA

**£12.90**<sup>PP</sup>

\* (FISH & KING PRAWNS £3.00 EXTRA PER DISH) \*\* (PLAIN COFFEE)

CUSTOMER SERVICE: WE AIM TO PROVIDE 100% CUSTOMER SATISFACTION. SHOULD YOU EXPERIENCE DIFFICULTIES OVER SERVICE OR FOOD PLEASE DO NOT HESITATE TO INFORM US.

**TAMARINDS**  
 CAFE · DINING · LOUNGE

T: 01676 533 308

WWW.CAFETAMARINDS.CO.UK

376 KENILWORTH ROAD, BALSALL COMMON,  
 COVENTRY, CV7 7ER  
 OPEN 7 DAYS A WEEK: 5.00PM - 11.00PM



Proud members of  
**Checkatrade.com**  
 Where reputation matters

**0121 7463044**  
**0800 3032559**  
**07773 911552**

**Laying Drives & Patios since 1979**



**5-YEAR GUARANTEE • NO UPFRONT PAYMENT • 100% SATISFACTION**

- ✓ TARMAC DRIVEWAYS
- ✓ BLOCK PAVING
- ✓ RESIN DRIVES
- ✓ COBBLESTONE PAVING & DRIVEWAYS
- ✓ CONCRETE IMPRINTING
- ✓ DAMP PROOF POINTING
- ✓ FENCING
- ✓ ROOFING

Please call us today for a FREE, NO OBLIGATION quotation:

**enquiries@drives4u.co.uk / www.drives4u.co.uk**

Please remember to mention Stonesthrow Directories when calling





**YOUR FAMILY RUN  
LOCAL  
ELECTRICAL CONTRACTOR**

**SERVING COVENTRY  
& WARWICKSHIRE  
FOR OVER 30 YEARS**



**EAGLE ELECTRICS LTD**



From changing a lamp to re-wiring your factory. We can help!  
FOR MORE INFORMATION OR A FREE QUOTATION, CONTACT DAVE ON:

T: **02476 464 138** M: **07730 309 332**

Email: **info@eagleelectrics.com**

Or find us online: **www.eagleelectrics.com**



**RAY'S**

**BUILDING AND LANDSCAPES LTD**

**PRIDE IN EVERY DETAIL  
SINCE 1985**

W: **www.raypundsackbuilds.org**

W: **rpundsack@live.com**

T: **01926 810 772**

M: **07449 581 930**



The difference is clear. Over 30 years of serving our customers has taught us that value is not just about price, it's also about gaining valued relationships. Working with our clients starts with detailed planning and a fair price, but equally working together to surpass expectation. Additionally, our clients have the advantage of a wealth of experience and skill that bridge all construction trades.

**FROM EXTENSIONS TO BATHROOMS OR KITCHENS TO LANDSCAPING:**

**WE DO IT ALL!**

**We look forward to hearing from you for a free consultation and quotation.**

**WE OFFER  
2 YEAR  
GUARANTEE  
ON ALL  
PROJECTS WE  
UNDERTAKE**

COMPANY REGISTERED IN ENGLAND & WALES NO: 11983174 VAT REGISTRATION NUMBER: 373525587

# WHAT'S ON LOCALLY

## **Balsall Common Country Market**

Date: every Saturday / Time: 10am - 12pm /  
Venue: The Jubilee, 225 Station Road, Balsall  
Common CV7 7FE

We are more than just a place to shop – we are a place where people meet and belong. Come and have a cup of tea or coffee with us along with home-made cakes and goodies. Our range of foods includes cakes to die for, savoury meals you can pop in the freezer for later in the week and jams and marmalades in a class of their own. We have splendid flower arrangements, plants for your garden that include both the unusual and old favourites. Our fruits and vegetables are home grown and wholesome.

## **Coffee Together**

Date: first Saturday of every month / Time:  
10.30am - 12noon; Venue: The Jubilee Centre,  
225 Station Rd, Balsall Common CV7 7FE  
Organised by Churches together in Balsall  
Common and Berkswell. Entry fee is £2. this  
includes coffee and pre-wrapped biscuit. All  
profits go to charity. Enquiries to Clare Laland at  
clmap18@gmail.com

## **Balsall Common Memories Cafe**

Date: Every 2nd Wednesday of the month /  
Time: 1.30pm - 3pm / Balsall Common Village  
Hall, Station Road, Balsall Common CV7 7FF  
For those with Dementia accompanied by their  
'Carer' our free afternoon sessions provide an  
opportunity to meet together over refreshments  
and enjoy a varied programme of Activities and  
Entertainment. For further information contact  
Christine 01676 532793.

## **Balsall Common Memories Cafe. Coffee and Chat**

Date: Every 4th Wednesday of the month / Time:  
10.30am - 12.30pm / Venue: St Peter's Hall,  
Holly Lane, Balsall Common CV7 7EA  
NEW for '22! Our additional free sessions for  
those with Dementia accompanied by their  
'Carer' are a time to Drop in for a Coffee, or Tea,  
and Biscuits and a social chat with others. Do  
come along and join us. For further information  
contact Christine on 01676 532793.

## **Card Club**

Date: every 2 weeks on Mondays / Time: 2.15 -  
4pm / Venue: Balsall Common Library  
Refreshments are provided for a small charge.  
For more information please ask at help Desk,  
call us on 01676 532 590 or visit  
[www.solihull.gov.uk/library-events](http://www.solihull.gov.uk/library-events)

## **Free Digital Training for older Solihull residents**

Various times and Age UK Solihull are offering  
free digital training for older Solihull residents  
who would like to improve their digital skills.  
Group courses and one-to-one support is  
available, for both beginners and those who  
already have basic digital skills. The training can  
help with online shopping, video calling,  
searching for information, accessing online  
learning, downloading and using apps, and more.  
For more information, contact Ashlee on  
07397 718 455 or visit  
[www.ageuk.org.uk/solihull/digital-champions](http://www.ageuk.org.uk/solihull/digital-champions)

## **Berkswell and Balsall Common Sports & Community Association**

Date: varied / Time: varied / Venue: The Lant,  
Meeting House Lane, Balsall Common  
With cricket, hockey, running, sailing and tennis  
clubs plus a clubhouse and bar. Facilities also  
available for private hire. See [www.bbcscs.co.uk](http://www.bbcscs.co.uk)  
or Facebook - BBCSCA / Berkswell Sports Bar for  
more information.

## **Firebird Singers**

Date: every Friday / Time: 7pm - 9pm / Venue:  
Meriden Village Hall, Main Road, Meriden  
A small and friendly choir, singing for pleasure  
whilst raising money for charity. Anyone 16+ that  
enjoys singing is welcome to join the choir. Come  
along, learn new songs, participate in our local  
concerts, make new friends. If you are interested  
in joining please contact Val on 01676522963 or  
Anna on 07792525999.

## **Heart of England WI**

Date: 2nd Thursday of the month / Time:  
7.30pm / Venue: Balsall Common Village Hall, 112  
Station Road CV7 7FF  
The Heart of England Women's Institute is a  
thriving group, with lively members who enjoy  
rambles, lunches, coffee mornings and craft  
evenings. New members are always welcome.  
Our 9th of February meeting will be all about  
Stress Management - a useful tool for the New  
Year maybe? Talks for the spring include "Second  
City Executions" 9th March and a practical  
demonstration of "Step into Spring - Flower  
Arranging" 13th April. More information is on  
Heart of England WI Facebook page or by  
phoning Lyn 01676 533675 or Kathryn  
01676 534824.

## **Berkswell Coronation Celebration**

Date: 7th of May / 12 noon / Venue: St John  
Baptist Field  
Neighbours and communities across the United  
Kingdom are invited to share food and fun  
together at Coronation Big Lunches on Sunday  
7th May 2023, in a nationwide act of celebration  
and friendship. Enjoy food and fun with your  
family and friends as you listen to a steel band!



No ticket required - just turn up with your own food/drink/plates/cups/blanket/chairs. Please note - if the weather is bad the event will move into the Church.

### **Cinema Organ Society - Live Concert on our 1935 Mighty Compton**

Date: 7th of May / Time: Doors open 1.30 pm.  
Curtain up 2.30 pm / Venue: Fentham Hall, Marsh Lane, Hampton-in-Arden, B92 0AH

A warm welcome awaits. No need to book. Our guest organist today is David Lowe. Admission £10 cash on the door, including interval refreshments and parking. Please telephone 01564 794778 for more details. [www.facebook.com/COSMidlandsCompton](http://www.facebook.com/COSMidlandsCompton), or [www.cinema-organs.org.uk](http://www.cinema-organs.org.uk)

### **Knowle Village Hall Association Coronation Celebration**

Date: 8th of May / Time: 10am / Venue: Knowle Village Hall

In celebration of the Coronation of H.M the King we will be serving coffee/tea and delicious home made cakes at the Hall and we cordially invite you to join us, relax and enjoy some refreshment on this very special Bank Holiday. Coffee/tea: £1.00. Cakes: £1.00. We look forward to welcoming you.

### **Cinema Organ Society - Live Concert on our 1935 Mighty Compton**

Date: 4th of June / Time: Doors open 1.30 pm.  
Curtain up 2.30 pm / Venue: Fentham Hall, Marsh Lane, Hampton-in-Arden, B92 0AH

A warm welcome awaits. No need to book. Our guest organist today is Michael Wooldridge. Admission £10 cash on the door, including interval refreshments and parking. Please telephone 01564 794778 for more details. [www.facebook.com/COSMidlandsCompton](http://www.facebook.com/COSMidlandsCompton), or [www.cinema-organs.org.uk](http://www.cinema-organs.org.uk)

### **The Firebird Singers present 'ON TOP OF THE WORLD'**

Date: 11th of June / Time: 2.30pm  
—7.30pm / Venue: The Manor Hotel, Meriden CV7 7NH

This is our final concert in support of Coventry & Warwickshire MIND and to celebrate we are hosting an auction of good deeds. tickets are £8, to book call Val on 01676522963, Anna on 07792525999 or Carole on 07969980475.

### **Balsall Common Methodist Church Toddlers Group**

Date: every Tuesday / Time: 10am - 11.30am / Venue: Church Hall, Station Road  
Term time only, £2 per adult, refreshments included. Open to all carers of pre-school children. All will be made very welcome. For further details contact Joy on 01676 532006.

### **Balsall Common Fun Run**

Date: 17th of September

Walk, jog, run, race 5k and 10k. Bookings for places will be open on 1st May 2023. Mini Runs from 10.30am. Main Run at 12 noon. Organised by Lily Mae Foundation. Please note that this year the Run will be starting and finishing at Balsall Common Primary School and have a slightly amended route to reflect this. For more information please see [www.lilymaefoundation.org](http://www.lilymaefoundation.org)

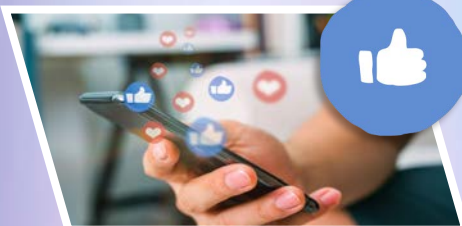
**WHILE WE DO OUR BEST TO ENSURE THE ACCURACY OF OUR LISTINGS, EVENTS MAY BE POSTPONED OR CANCELLED WITHOUT NOTICE. PLEASE CONFIRM WITH THE ORGANISER BEFORE MAKING ANY PLANS FOR ATTENDING EVENTS.**

**FOR YOUR NEWS EVENTS AND GROUP MEETINGS TO BE FEATURED FREE OF CHARGE ON OUR WHAT'S ON PAGE PLEASE**

**EMAIL KSENIA:**

**[INFO@STONESTHROWPUBLICATIONS.CO.UK](mailto:INFO@STONESTHROWPUBLICATIONS.CO.UK)**

**STAY UP TO DATE WITH OUR NEWS, EVENTS & OFFERS**



**Scan, Like and Follow us:**

Facebook: [@StonestrowPublications](https://www.facebook.com/StonestrowPublications)

Instagram: [@stonestrow\\_publications](https://www.instagram.com/stonestrow_publications)





Using a hands-on approach our highly qualified and experienced physiotherapists can help you to reduce pain, improve mobility and increase strength

**Offers**

Check our website for our latest offers

**Home Visits Available**

Call us for more information

21D Station Rd, Knowle, Solihull, B93 0HL  
also at Allesley Village Surgery, CV5 9BD  
and University of Warwick Sports &  
Wellness Hub, CV4 7EU

Tel: 01564 660557 / 024 7531 0840  
[www.physioandhealthmatters.co.uk](http://www.physioandhealthmatters.co.uk)

# FREE BEE FLOWER MIX GIVEAWAY

For your free bee mix please email  
your address to:

[stpdirectories@hotmail.com](mailto:stpdirectories@hotmail.com)

All we ask in return is to answer  
our email once every 2 months to  
confirm receipt of your copy of this  
magazine as part of our distribution  
checks.

(your email address  
will only be used  
for this purpose)



## IS YOUR SOFA LOOKING TIRED & SHABBY? CANNOT AFFORD TO BUY BRAND NEW?

*Complete upholstery & re-upholstery services for  
traditional & contemporary pieces in fabric & leather*

### **SPECIALIST LEATHER REPAIR:**

*Professional cleaning & stain removal*

*Scuffs, cat scratches, burns*

*Colour loss restored*

*Panel replacement*

*Aniline restoration*

*Large range of fabric & leather*

### **UPHOLSTERY:**

*New seat cushions*

*New springs / webbings*

*Frame repairs*

*Free inspection*

*All work guaranteed*



## **Mark Miller**

### **Leather Cleaning & Repair**

**Undertake Commercial & Domestic Upholstery**

**01455 612730 / 07949 606949**

**[www.leathercleaningandrepair.co.uk](http://www.leathercleaningandrepair.co.uk)**



# Heritage

DRIVES & LANDSCAPES LTD

**FREE QUOTATIONS  
DISCOUNT PRICES**



## Driveways & Landscapes In Warwickshire

Professional Driveway & landscaping company based in Solihull, working throughout Warwickshire, Coventry, Kenilworth & surrounding areas.



### We pride ourselves on our high standards of workmanship

BLOCK PAVING | TARMACING (red & black) | PATIOS | RESIN | BRICKWORK SLABBING | GRAVEL | FENCING LANDSCAPING | PROPERTY & ROOF REPAIRS | DRIVEWAY MAINTENANCE (Pressure cleaning & sealing - weed free)

[www.heritagedrivesandlandscapes.co.uk](http://www.heritagedrivesandlandscapes.co.uk)

Sunnyside, Kenilworth Road, Hampton in Arden B92 0LW



 **02476 014 131**

 **07377 534 460**

 **heritagedrivesltd@gmail.com**

# RESTAURANTS

## & TAKEAWAYS

### BALSALL COMMON, BERKSWELL

#### BENGAL BRASSERIE *Indian*

349-351 Kenilworth Rd, Balsall Common CV7 7DL  
**01676 533 883**

#### MASALA CLUB *Indian*

235-239 Station Rd, Balsall Common CV7 7EG  
**1676 533 210**

#### THE BRICKMAKERS ARMS *Gastropub*

307 Station Road, Berkswell CV7 7EG  
**01676 533 890**

#### THE WHITE HORSE *British, European*

Kenilworth Rd, Balsall Common CV7 7DT  
**01676 533 207**

#### THE GEORGE IN THE TREE *Gastropub*

Kenilworth Rd CV7 7EX  
**01676 533 118**

#### CAFE TAMARINDS *Pan-Asian*

376 Kenilworth Rd CV7 7ER  
**01676 533 308**

#### BALSALL COMMON FISH BAR *Fish & Chips*

207 Station Rd, Balsall Common CV7 7FE  
**01676 533 576**

#### LA DELICIA *British, European*

231 Station Rd, Balsall Common CV7 7EG  
**01676 532 177**

#### ORIENTAL EXPRESS *Chinese Takeaway*

176 Station Rd, Balsall Common CV7 7FD  
**01676 535 900**

#### COSTA COFFEE *Café*

unit 2 Station Rd, Balsall Common CV7 7FE  
**01676 529 277**

#### MCKEES BRASSERIE *British, European*

273 Kenilworth Road, Balsall Common CV7 7EL  
**01676 533 004**

#### OAKES FARM SHOP & CAFE *Café*

Balsall Street, Balsall Common CV7 7AQ  
**01676 535 537**

#### YE OLDE SARACENS HEAD *Gastropub*

Balsall Street, Balsall Common CV7 7AS  
**01676 533 862**

#### DOMINO'S PIZZA *Takeaway Pizza*

209 Station Road, Balsall Common, CV7 7FE  
**01676 530 099**

#### THE RAILWAY *Gastropub*

547 Station Rd, Balsall Common CV7 7EF  
**01676 533 284**

#### THE OAK ROOM AT NAILCOTE HALL HOTEL *British, European*

Nailcote Lane, Berkswell  
**02476 466 174**

#### BEAR INN *Gastropub*

Spencers Lane, Berkswell CV7 7BB  
**01676 925 562**

#### BEWITCHED COFFEE *Café*

345 Kenilworth Rd, Balsall Common CV7 7DL

### MERIDEN

#### THE BARN AT BERRYFIELDS FARM *Cafe*

The Berryfields Farm Shop, Berkswell Road,  
Meriden CV7 7LB  
**01676 522 155**

#### MARCO PIERRE WHITE *European*

The Manor Hotel at Meriden, Main Road,  
Meriden CV7 7NH  
**01676 522 735**

#### STRAWBERRY BANK HOTEL & RESTAURANT *British*

Main Rd, Meriden CV7 7NF  
**01676 522 117**

#### THE BULLS HEAD *Gastropub*

Main Rd, Meriden CV7 7NN  
**01676 523 798**

### HAMPTON IN ARDEN

#### THE LAKE AT BARSTON *Global Grill*

Marsh House Farm Ln, Barston B92 0LB  
**01675 444 890**

#### THE WHITE LION INN *Gastropub*

High Street, Hampton-in-Arden  
**01675 442 833**

#### BEECHES BAR & GRILL *Gastropub*

Hampton-in-Arden B92 0AH  
**01675 442 277**

#### PEEL'S RESTAURANT *British, European*

Hampton Manor, Shadow Brook Lane,  
Hampton in Arden B92 0EN  
**01675 446 080**

#### TOBY CARVERY *British*

Stonebridge Island, Coventry Rd, Meriden CV7 7HL  
**01675 442 326**

# USEFUL LOCAL TELEPHONE

## NUMBERS

### MEDICAL

NHS Advice Line & Out of Hours Dental Advice 111	
Warwick Hospital	01926 495 321
Coventry University Hospital	02476 964 000
Solihull Hospital	0121 424 2000
Balsall Common Health Centre	01676 935 000

### POLICE & FIRE

West Midlands Police	0845 113 5000 or 101
Warwickshire Fire & Rescue	01675 62 007
Bickenhill Community Fire Station	0121 380 7527
Solihull Fire Station	0121 380 7521

### HELPLINES & HOTLINES

Samaritans	116123
Consumer Advice	03454 04 05 06
Citizens Advice Bureau	01926 457 900
RSPCA	024 7671 3717

### UTILITIES

Electricity Power Loss	0800 3281111
Severn Trent Water	0800 783 4444
Transco Gas Leak	0800 111 999
BT Fault Line	0800 800151
National Rail Enquiries:	03457 48 49 50

### TRAVEL

Chiltern Railways	08456 005165
National Rail Enquiries	08457 484950
West Midlands Trains	0333 311 0039
Bus Travel Line	0871 2002233
Coventry Airport	02476 301717
Birmingham Airport BHX	0871 222 0072

## LEAFLET PRINT & DISTRIBUTION

### PRINT

5,000 = £140.00

10,000 = £260.00

A5 Double-sided Leaflet 135GSM Gloss.

### DISTRIBUTION

FROM JUST £35.00 PER 1,000.

Prices are plus VAT.

Only available in conjunction with Stonestrow Publications printing services.

01926 8000 84 | 075 111 222 45  
INFO@STONESTROWPUBLICATIONS.CO.UK

# HOROSCOPES: APRIL / MAY

## ARIES MARCH 21 - APRIL 20

Your ruler, dynamic Mars, remains in individualistic Aquarius until the 15th, you can use this time wisely by networking and interacting with totally new groups of people and business colleagues. Your earning ability increases as Mercury arrives in Taurus on the 11th, innovative new opportunities to influence your work progress are coming your way. May is a super energetic month for you, starting with Venus arriving in your sign on the 3rd, followed by Jupiter on the 11th and finally Mars on the 25th. You'll feel this huge energy shift as your plans and projects gather momentum and new ideas become apparent. The Scorpio full moon eclipse on the 16th suggests that some important financial issues will come to the surface.

## TAURUS APRIL 21 - MAY 21

Abundant Jupiter in Pisces brings enhanced intuition and renewed confidence and courage when it comes to making new friends. Your talents are in the spotlight and you'll need to take stock and review your options as your innovative ideas can now become reality. Venus arrives in dreamy Pisces on the 6th, perfect timing for romance to blossom! May: Communicative Mercury has just arrived in Gemini, illuminating the communication area of your chart. It's time to profit from a new sense of resolve when it comes to getting things done, try to make your decisions before Mercury turns retrograde on the 10th. It's time to let go of outmoded situations and discover inspirational new ways forward.

## GEMINI MAY 22 - JUNE 21

Dynamic Mars arrives at the highest point of your chart on the 15th, this is your cue to shift gear and turn up the pace. Your finances are a high priority and you should have more than one new money making idea up your sleeve. The full moon in Libra on the 16th suggests a creative opportunity could be coming your way. May: Mercury, your ruler, has just arrived in your sign offering up an exciting theme of innovative ideas and exciting new plans to help you move ahead. Try to get things done before the retrograde phase begins on the 10th. The powerful Scorpio full moon eclipse on the 16th illuminates a challenge around an ambitious project, access your intuition for best results.

## CANCER JUNE 22 - JULY 22

The powerful Aries new moon on the 1st offers up some new and innovative opportunities concerning your career goals, if you have been holding yourself back, now is the time to stride forth and be courageous. Domestic matters also get the go ahead after the Libra full moon on the 16th, any recent setbacks and delays should start to ease. May: This month indicates that a totally different dynamic is on offer as your career moves into the spotlight. Jupiter arriving in Aries on the 11th places your confidence at an all-time high and pushes you even harder to go after what you want. A close friend offers you some good advice around the time of the Gemini new moon on the 30th, try to be open to suggestions.

## LEO JULY 23 - AUGUST 23

During April your overall wellbeing is firmly in the spotlight, the Aries new moon on the 1st kick-starts your energy urging you to take time out for study, adventure and travel. Broadening your horizons is definitely the theme for the next month as you tune into your needs and make the necessary changes. May begins by offering a chance to clear up any emotional matters that have been in the background for some time. After the 11th, as mighty Jupiter changes sign, your thoughts turn to further broadening your horizons and travelling to some faraway places. The Scorpio full moon eclipse on the 16th illuminates your domestic area and a deep friendship could become especially rewarding for you.

## VIRGO AUGUST 24 - SEPTEMBER 22

April arrives with a much clearer picture of your way forward; energetic Mars in Aquarius offers the dynamic energy to capitalise on professional matters, as people around you will be very receptive to your ideas and plans. The powerful full moon in Libra on the 16th suggests that money matters may require careful handling. May: Pisces energy is strong at the start of the month, illuminating the relationship sector of your chart. Your intuition should be at its height, but you will need to avoid wasting energy on trivia as Mercury in Gemini is so easily distracted. The Scorpio full moon on the 16th in your financial area offers a more practical approach to enhance your earning potential.

## LIBRA SEPTEMBER 23 - OCTOBER 23

The important full moon in your sign on the 16th illuminates your ability to be successful and shows the need for you to find a good balance and a positive outlook in all areas of life. As dynamic Mars enters Pisces on the 15th, the emphasis is on your health and wellbeing, good nutrition, rest and relaxation are more important than ever. May: Your overall health and wellbeing continue to be illuminated this month as the intuitive sign of Pisces is strongly emphasised in your chart. Take this opportunity to further develop any new health strategies as this is the perfect time to make some lasting changes. The Scorpio full moon on the 16th suggests new financial insights are ready to be uncovered.

## SCORPIO OCTOBER 24 - NOVEMBER 22

April's planetary activity turns your attention to work related matters. The powerful Aries new moon on the 1st offers some exciting new prospects, making this the perfect time for success. After the 6th, relationship planet Venus arrives in enchanting and sensitive Pisces – very well positioned to enhance love and romance! May: The full moon in your sign on the 16th confirms the important decisions that you have taken in recent months, step back and enjoy your success! Work related issues are on a roll as new projects coincide with your determination to succeed. The new moon in Gemini on the 30th highlights a financial issue that needs addressing.

## SAGITTARIUS NOVEMBER 23 - DECEMBER 21

Work and lifestyle issues are in the spotlight this month, you'll feel drawn to finding a better balance in these areas. Creativity should also be at a peak as Mars is innovative and resourceful in Aquarius. A much higher profile leads you to being in the right place at the right time, particularly around the full moon on the 16th. May: Your love life enters the spotlight after the 3rd as romantic Venus arrives in passionate Aries and lights up this area of your chart. Relationships should flourish under these current trends and Jupiter, your ruler, is beneficial after the 11th. Mercury in Gemini ensures that you stay curious and explore, but try to avoid arguments.

## CAPRICORN DECEMBER 22 - JANUARY 20

During April the emphasis is on all forms of communication; Abundant Jupiter and mystical Neptune are both in intuitive Pisces, giving you the gift of insight wherever it is most needed. An added boost comes from the powerful Aries new moon, allowing you to firm up your strategy for any career expansion that you have in mind. May brings a new sense of adventure and exciting new possibilities as your communication sector is illuminated and you have plenty to say. The Sun and impulsive Uranus also occupy pivotal positions in your chart, ensuring that you enjoy popularity and recognition; use positive thinking to get the very best out of any new social endeavours.

## AQUARIUS JANUARY 21 - FEBRUARY 18

Under the current planetary trends, ideas and communication around all aspects of your earning potential continue to occupy the spotlight. Dynamic Mars remains in your sign until the 15th, be sure to make the most of this powerful energy for multiple creative ideas. The Taurus new moon on the 30th brings a longstanding domestic issue to the forefront. During May your home becomes one of your top priorities, if you maximise your potential and put your powers of judgement to the test you should see the successful culmination of an ambitious project. Venus arrives in Aries on the 3rd, enthusiasm is high as love and relationships offer excitement and delight.

## PISCES FEBRUARY 19 - MARCH 20

Your breakthroughs arrive as you start to view events from an entirely new perspective. The powerful Aries new moon on the 1st suggests innovative and beneficial change will be coming your way very soon. Venus arrives in your sign on the 6th, joining Jupiter and Neptune and kick-starting your desire to make some important changes. May: Energetic Mars moves out of your sign and into Aries on the 25th, offering you the opportunity for renewal and clearing out. Venus is passionate in lively Aries from the 3rd suggesting that you have supercharged energy for ridding yourself of anything that is not essential in your life, even if it requires some serious soul searching.

Christine Chalklin, Inspirational Astrologer and Life Coach.

Take a refreshing new look at the year ahead by booking an astrological reading now – Consultations are available on Skype, Zoom, WhatsApp or telephone. **Mobile: 07813 483549 | [www.restyleyourlife.co.uk](http://www.restyleyourlife.co.uk) | [christine\\_chalklin@hotmail.com](mailto:christine_chalklin@hotmail.com)**



Local   
Reliable   
Trusted



SUPPORTING OUR  
**NHS**  
THANK YOU



# CROWN Driveways & Patios

## Limited time offer: Winter Discounts

- Patios
- Driveways
- Tarmac
- Block Paving
- Resin Drives
- Entrance Pattern
- Drainage
- Wall & Steps
- Fencing & Gates
- Landscaping

  
CROWN  
DRIVEWAYS & PATIOS

Call us for a FREE,  
NO OBLIGATION Quotation:

**0121 746 3028**

**07786 300 839**

Serving Balsall Common, Meriden,  
Hampton in Arden & surrounding areas

[www.crowndriveways.co.uk](http://www.crowndriveways.co.uk)

# CHARLES III

## LONG LIVE THE KING

As Prince of Wales, Charles has been preparing for this moment for most of his life, under the tutelage and guidance of his late mother, Elizabeth II. He will be recorded in history as the longest ever heir apparent, and the oldest to ever accede to the British throne at the age of 73.

Charles Philip Arthur George was born on 14th November 1948, during the reign of his grandfather King George VI. After the death of the King in 1952, his mother Elizabeth became Queen and Charles became heir to the throne at just three years old.

Charles was educated at Cheam and Gordonstoun schools, in the footsteps of his father Philip. He was the first heir apparent to attend school rather than receive private tuition. His time at Gordonstoun was hard, he referred to it as “Colditz in kilts” but later reflected, “...it taught me to accept challenges and take the initiative.” He left in 1967 with six O levels and two A levels in French and History.

Charles went on to read Archaeology and Anthropology, then switched to History at Trinity College, Cambridge. He gained a 2:2 Bachelor of Arts in 1970. As Prince of Wales, he also spent a term at the University College in Aberystwyth, in order to study the Welsh language and history. In 1975, Cambridge University awarded him a Master of Arts.

Charles joined the Royal Air Force and trained as a jet pilot, then the Royal Navy, where he qualified as a helicopter pilot. The Prince’s Trust was founded in 1976 with the £7,500 severance pay from the Navy. Since then, Charles has established sixteen more charities which raise over £100 million annually.

In 1981, he married Lady Diana Spencer. They had two sons, William born in 1982 and Harry in 1984.

The couple divorced in



1996, and Diana was tragically killed in a car accident a year later.

In 2005, Charles married Camilla Parker-Bowles. The official title of Princess of Wales was never publicly acknowledged, instead Camilla became known as the Duchess of Cornwall.

The Duchy of Cornwall Estate was established by Edward III in 1337 for the heir to the throne. As Duke of Cornwall, the 53,000 hectare estate provided Charles with a private income to fund public, charitable and private activities, effectively making him financially independent. The estate passed to Prince William when he became heir apparent.

On 8th September 2022, Queen Elizabeth passed away peacefully and King Charles III became the new monarch. Coronation plans have been laid out for many years, under the codename ‘Operation Golden Orb’. It’s thought that the service will be smaller than the last coronation in 1953, and include different faiths and communities to reflect the change in British society. The Church of England ceremony will be broadcast internationally, and requires an oath and anointment, delivery of the orb and enthronement. The coronation of King Charles III and Camilla takes place in Westminster Abbey on 6th May 2023. Long live the King!





# CLASSIFIEDS



**Prior Products**  
Limited  
Visit Our Showroom:  
Clifford Chambers, Nr Stratford upon Avon CV37 8LW  
Call us on: **01926 422200**  
**www.priorproducts.co.uk**  
See our full advert on p. 5  
Please remember to mention Stonesthrow Directory  
when calling



**Lady Katherine**  
**Housing & Care**  
**01564 772415**  
Temple Balsall, Knowle, Solihull, B93 0AN



**solclean**  
EXTERNAL CLEANING SPECIALISTS  
**CALEANING DRIVEWAYS**  
**PATIOS ~ ROOFS ~ GUTTERS**  
**FASCIAS & SOFFITS**  
**07546 264164**  
**enquiries@solclean.co.uk**  
**www.solclean.co.uk**

**EAGLE ELECTRICS LTD**



**EE**



**02476 464 138**  
**07730 309 332**  
**info@eagleelectrics.com**  
**www.electricalcoventry.org.uk**



**NICEIC**  
APPROVED  
CONTRACTOR

**Xtreme Tree Care**

- Crown Thinning & Reduction •
- Felling & Dismantling • Pruning & Shaping •
- Hedge Trimming & Removal •
- Specialist Stump Removal •

**07951 332 401**  
**xtremetreecare@aol.co.uk**

**HOMEWOOD**  
**Leamington Spa**   
Residential Care Home Live later life well

**01926 423 519**  
**www.mha.org.uk/homewood**



**R W McDermott**  
Property Maintenance  
**07880 748 054**  
T: **07880 748 054**  
E: **rwmcdermottpropertymaintenance@gmail.com**

**Bablake**   
A 3-18 independent school  
**024 7627 1200**  
**INFO@BABLAKE.COVENTRY.SCH.UK**  
**WWW.BABLAKE.COM**

**Cabinmaster** 

**Brand New Show Site Open 2023**

**Stunning Contemporary Garden Rooms**

Garden Bar • Home Gym • Office Space • Family Room • Cinema Room  
Entertaining Space • Hot Tub and Swim Spa Enclosure • Sun Room

**0115 932 8888 | [www.cabinmaster.co.uk](http://www.cabinmaster.co.uk)**

Show Site: Studley Garden Centre, Henley Road, Studley B80 7DR

**ArcticCabins** 

**BBQ Cabins & Garden Bars**

20 years in business • Manufactured in the UK • High quality central BBQ grill  
Delivered and installed by our trained fitters • 10 years guarantee • All year round use

**0115 932 8888 | [www.arcticcabins.co.uk](http://www.arcticcabins.co.uk)**

# FARM SHOP • CAFÉ BUTCHERY • DELICATESSEN BAKERY

*locally sourced & homemade produce  
in Balsall Common*



OUR COUNTERS WILL BE FILLED WITH  
ALL YOUR BBQ ESSENTIALS THIS SPRING:

**BURGERS, SAUSAGES, KOFTAS, KEBABS  
& MORE!**

OUR DELI WILL ALSO BE FILLED  
WITH ALL YOUR PICNIC ESSENTIALS:

**CELEBRATE THE CORONATION OF KING  
CHARLES III WITH OUR AWARD WINNING  
SCOTCH EGGS, HOMEMADE SAUSAGE ROLLS  
& HAND RAISED PORK PIES!**

## **EASTER OPENING TIMES:**

**GOOD FRIDAY  
9AM-5PM**

**EASTER SATURDAY  
9AM-5PM**

**EASTER SUNDAY  
CLOSED**

**EASTER MONDAY  
9AM-5PM**

**Oakes**  
FARM SHOP

## **OPENING TIMES**

**MONDAY - SATURDAY  
9AM - 5PM**

**SUNDAY 10AM - 4PM**

CAFÉ LAST ORDERS ONE HOUR PRIOR TO  
CLOSING TIMES ABOVE.

**01676 535537**

**INFO@OAKESFARMSHOP.CO.UK**

**WWW.OAKESFARMSHOP.CO.UK**

**BALSALL STREET, BALSALL COMMON  
CV7 7AQ**

Pension  
**TRANSFEER**  
Gold Standard



Chartered

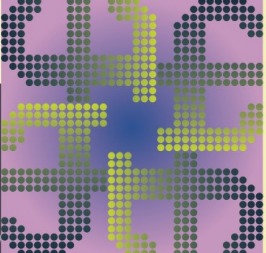
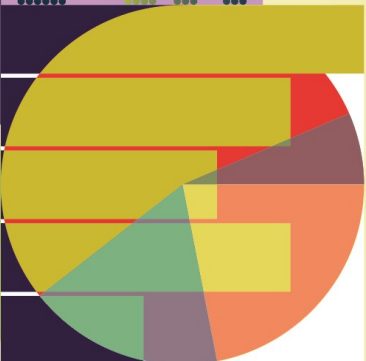
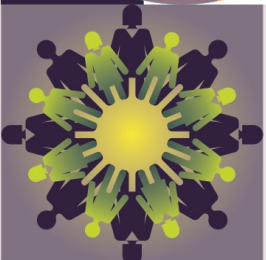


# JAMIESON CHRISTIE CHARTERED FINANCIAL PLANNERS

## TIME FOR A CHANGE?

Talk to us about a review of your previously transferred pension benefits plus

- Retirement planning and pension consolidation
- Tax efficient investing including business sales and inheritance
- Socially responsible investing for growth and/or income
- Inheritance tax and estate planning



**Contact us to learn how we can help.**

Head Office: Regent House, 430-432 Kenilworth Road,

Balsall Common CV7 7DN

Telephone 01676 532210 / 03300 505040

mail@jamiesonchristie.com / www.jamiesonchristie.com

Serving our clients nationwide with offices in London, East Midlands and Staffordshire.

Authorised and regulated by the Financial Conduct Authority.

**Tailored financial planning.**

**For now, for the future.**



Google  
Customer Reviews  
★★★★★