

# STONESTHROW DIRECTORY



FREE BEE-FRIENDLY FLOWER SEEDS P.19

THE DIFFERENCE BETWEEN CARE & NURSING HOMES P.8

USEFUL LOCAL TELEPHONE NUMBERS / ARTICLES / HOROSCOPES

WHAT'S ON / LOCAL RESTAURANTS & TAKEAWAYS

CHARLES III: LONG LIVE THE KING! P.21



# WARWICK

APRIL / MAY 2023

**JAMIESON CHRISTIE**  
WEALTH MANAGEMENT



**SEE  
BACK PAGE  
FOR MORE  
DETAILS**

INVESTMENTS, PENSIONS, TAX PLANNING

ESTATE and IHT PLANNING, EDUCATIONAL FEES, EMPLOYEE BENEFITS


The logo for Cabinmaster, featuring the brand name in a white sans-serif font and a stylized white leaf icon to the right.A circular badge with a green-to-white gradient background, containing the text "Brand New Show Site Open 2023" in white.A photograph of a modern, light-colored garden room with a dark roof and large glass doors. It is situated on a dark wooden deck with outdoor furniture, surrounded by a green lawn and a tall hedge.

## Stunning Contemporary Garden Rooms

Garden Bar • Home Gym • Office Space • Family Room • Cinema Room  
Entertaining Space • Hot Tub and Swim Spa Enclosure • Sun Room

0115 932 8888 | [www.cabinmaster.co.uk](http://www.cabinmaster.co.uk)

Show Site: Studley Garden Centre, Henley Road, Studley B80 7DR

The logo for ArcticCabins, featuring the brand name in a white sans-serif font and a small white silhouette of a reindeer to the right.A photograph of a small, round wooden cabin with a blue metal roof and a decorative door. It is set in a garden with trees and ferns.

## BBQ Cabins & Garden Bars

20 years in business • Manufactured in the UK • High quality central BBQ grill  
Delivered and installed by our trained fitters • 10 years guarantee • All year round use

0115 932 8888 | [www.arcticcabins.co.uk](http://www.arcticcabins.co.uk)



**Aquarius Interiors Ltd**

**CURTAINS AND BLINDS**

20% off New Formosa  
Motorised Luxaflex  
Awinings when  
ordered before the  
31st May 2023

*Special offer  
for all  
Stonesthrow  
readers*



**53, Abbey End, Kenilworth CV8 1QJ.**

**Tel: 01926 359096**

**Russells Garden Centre, Mill Hill,**

**Baginton, Coventry CV8 3AG.**

**Tel: 024 7771 7517**

# A NOTE

## FROM THE EDITOR

Hello and welcome to our April/May edition of the Stonestrow Directory.

Fingers crossed for some good weather over the Easter weekend, which is relatively early this year: Friday 7th to Monday 9th. But why does Easter, like the proverbial bunny, hop around so much? In a nutshell (or should that be an Easter eggshell?), it's because Easter falls on the first Sunday following the full moon on or after the spring equinox, which is assumed to be 21st March (even though that itself can vary between 19th and 22nd March). May is Local and Community History Month, which is designed to increase awareness of local history. Since our local communities are so important to us as a business, we need no further prompting to get out and about and explore the history of our area. You can find more information at [history.org.uk](http://history.org.uk).

There are plenty of special offers and discounts exclusive to our readers in this edition. Please remember to mention Stonestrow Directories when calling our advertisers, so we can bring even more trusted local services to your door. We strive to support local businesses, so if you or someone you know runs a small business in or near Warwick - please do get in touch for a friendly chat about how we can connect you to thousands of potential clients on your doorstep.

As always, we have prepared a list of local news and events (see p.18-19), a couple of good read articles, listings of your local restaurants & takeaways, useful local telephone numbers: it's all in one handy guide, brought to you by a local resident.

Here are the dates for your calendar: 7<sup>th</sup> of April - Good Friday Bank Holiday; 10<sup>th</sup> of April - Easter Monday Bank Holiday; 1st of May - Early May Bank Holiday; 6<sup>th</sup> of May - Bank Holiday for the Coronation of King Charles III; 29<sup>th</sup> of May - Spring Bank Holiday.

However you spend the next couple of months, keep your heart and your business local.

Yours, Stonestrow Publications.

01926 8000 84 / 075 111 222 45  
INFO@STONESTROWPUBLICATIONS.CO.UK  
WWW.STONESTROWPUBLICATIONS.CO.UK

# CONTENTS

## IN THIS ISSUE



We gratefully acknowledge the support of businesses and organisations, whose adverts or information appear in Stonestrow Publications Ltd. Whilst every effort is taken to ensure the accuracy, we can not accept responsibility for loss, damage or omission caused by error in the printing of an advert or an article. Nor can we accept responsibility for claims made by advertisers/contributors, or services, provided by the advertisers. It is the responsibility of the advertiser to make sure that the information they provide is correct and up to date at the time of the publication. No part of this directory can be reproduced, copied or stored without the prior written permission of the Stonestrow Publications Ltd. The use of this magazine for direct marketing or canvassing is strictly prohibited. Distribution area and day may vary at the discretion of the publishers. All artwork, pictures and text are accepted on the basis, that permission for their use in the publication has been obtained by the advertiser or contributor. Stonestrow Publications Ltd can not accept responsibility for alterations or changes of details after the publication date. **Stonestrow Publications Ltd**





# Prior Products Limited

WINDOWS • DOORS • CONSERVATORIES • BI-FOLD DOORS • ROOFLINE



- ◆ Manufacturers & Installers of PVCu Windows, Doors and Conservatories
- ◆ A variety of Colours available
- ◆ Warmer Roof Tiled Conservatories
- ◆ Lantern Roofs & Rubber Roofs
- ◆ Garage Doors
- ◆ Aluminium & Timber Windows also available
- ◆ Trade Frames (supply only) available



**CERTASS**



Clearly the most energy efficient window glass

VISIT OUR SHOWROOM:

Tuesday - Saturday 10:30am - 3pm

at Stratford Garden Centre

Clifford Chambers, Nr Stratford upon Avon CV37 8LW

Call: 01926 422200

Or visit: [www.priorproducts.co.uk](http://www.priorproducts.co.uk)

**2 YEAR  
0% FINANCE  
AVAILABLE**  
Subject to conditions

**EXTENDED  
OFFER UP TO  
37.5%  
OFF**

**VALID UNTIL  
END OF APRIL  
ONLY!**

# MORE THAN JUST WINDOWS: HOW YOUR GLAZING CHOICES CAN MAKE A STYLE & EFFICIENCY STATEMENT



If you are looking for inspiration when upgrading your windows and doors, there are plenty of trends to watch out for, especially if it's important to you to keep your home updated with the latest in energy efficient glazing. Here's a list of the current developments that you may want to consider when renovating your home.

## FRAMELESS STRUCTURAL GLAZING

As the name suggests, this is glazing that has no frame. As the glass used is thicker and stronger you do not need framing systems to help support the installation. You get an abundance of natural light which can make the room cosy and comfortable as well as providing a boost to your mental health.

## FLOOR TO CEILING WINDOWS

Having spent more time indoors in the last two years, homeowners are looking for ways to bring the outside in. Floor to ceiling windows are one way to do this, and they are particularly popular in kitchen designs, flooding the space with natural light. Plus with fewer light fixtures needed, the reduced lighting load cuts down on utility bills – and results in valuable savings over time.

## STRUCTURAL GLAZING

Structural glazing is a term used to describe glass that is integral to the design of a building. It involves large glass panels, which usually bear some weight in the structure. Uses can include sliding glass doors, roofs, extensions, entrance ways, canopies, and even the humble window.

## BRIGHT COLOUR FRAMES

We're used to seeing white uPVC window frames, but times have moved on and they now come in any colour you can think of! This gives you great flexibility in personalising your home, perhaps in a

subtle shade which will complement the existing architecture and stay in keeping with surrounding homes, or maybe you'd prefer to make more of a statement!

## GLASS CANOPIES

Glass canopies are an attractive, yet highly practical architectural feature typically located over a building's entrance. Made from toughened glass, these are incredibly durable structures that are more than capable of withstanding heavy rain and a build-up of snow. People choose them because they like having a feature that maintains natural light as well as blending in with other glazed elements of the building.

## SOLAR CONTROL GLASS

With the trend towards big picture windows and more glazing, there's also a need to reduce glare and excessive heat. Solar control glass is one solution. It's a hi-tech product with a metallic coating applied to one side of the pane, which allows sunlight to pass through the window while radiating and reflecting away some of the infrared part of the sunlight itself. This allows the indoor area to stay brighter and cooler than would be the case with plain glass.

## ENERGY EFFICIENCY

The more efficient a window is, the more it will help to keep the heat in your home and save you money on your energy bills. The BFRC (British Fenestration Rating Council) rate the thermal efficiency of windows from A to G, with A being the most efficient. To meet "Energy Saving Recommendation" certification, the windows must be C-rated at the very least.

**About the Author:** Helen Say is a freelance copywriter and blogger [www.cblservices.co.uk](http://www.cblservices.co.uk)



# Misty Gouble Glazing?

Hi My name is Dave Millidge, let me introduce my company where I repair windows and replace misted up Double glazed units.

The area that I cover is Coventry and Warwickshire. You may have seen me around in your street or even have family and friends who I have worked for in the past ten years, with over 6,000 satisfied customers during that period. I started Misty to Clear to give customers the best value repairs in the current climate.

The Misty to Clear website allows total transparency of the customer experience. You can log into the website and view work that I have carried out. You can also leave feedback on social media. Therefore I give a 5 year guarantee on all new double glazed units fitted by Misty to Clear.

This is a genuine guarantee which does not come as an extra to my price.

I started Misty to Clear mindful that the cost of repairs is probably key to most people's budget when using tradesmen to do work on their behalf in their homes.

I offer a lower cost service to both old and new customers as I operate directly for the customer with no additional hidden charges or insurance costs to you the customer.

So my Company name is Misty to Clear where I can offer steamed up window glass replacement and fix broken handles, hinges, seals, window locks and door locks.

I also change glass in Velux windows too.

**Satisfaction guaranteed to be a high standard that carries a 5 year manufacturer backed guarantee.**



**OAP  
DISCOUNT**

**Clearly a great service!**

**Don't replace  
the Frames  
...just the  
Panels!**

Misted/Failed Double Glazed  
Units Replaced  
Broken or Damaged Windows?  
Faulty Hinges, Handles or Locks?  
Want the latest energy  
saving glass?  
5 year guarantee  
on new double glazing

**MISTY to CLEAR** Window  
Repair Service

**OVER 25 YEARS  
EXPERIENCE**

**SATISFACTION  
GUARANTEED**

Call Dave Millidge

**07704613430**

web:  
[www.mtcwindows.co.uk](http://www.mtcwindows.co.uk)  
email:  
[dave@mtcwindows.co.uk](mailto:dave@mtcwindows.co.uk)

**Misty To Clear  
Warwick Limited**

# THE DIFFERENCE BETWEEN CARE & NURSING HOMES

When the time comes to think about long-term care for a loved one, the term “care home” conjures up different meanings for different people. One of the most frequent questions people ask is whether they need to be considering a “care home” or “nursing home” and the two terms can become interchangeable in most people’s minds.

We can think of a “care home” as being a generic term describing a facility that provides accommodation and personal care for people who need extra support in their daily lives. Personal care might include help with eating, washing, dressing, going to the toilet or taking medication.

Broadly speaking, we can split “care homes” into two separate categories: residential care homes, and nursing homes. Residential care homes and nursing homes do provide similar services but understanding the differences can help you and your family choose which is right for your situation.

**A RESIDENTIAL CARE HOME** is defined as “a small establishment providing accommodation and care for people who are unable to look after themselves.” Care is provided 24-hours a day by trained Care Assistants. Commonly residents are elderly and their need for care is because of degenerative health conditions associated with ageing e.g. reduced mobility. The term “care home”, therefore, broadly covers all types of residential care facility. Some care homes are privately owned – perhaps by private individuals or companies – others are run by local councils.

**A NURSING HOME** is an establishment for people who don’t need to be in a hospital but can’t be cared for at home. In a nursing home, care is provided 24 hours a day by Registered Nurses who are supported by Care Assistants. The services might include administration of intravenous medication, or wound care, or residents may need rehabilitation after a serious injury or debilitating illness. Residents may not necessarily therefore be elderly. Both types of home provide 24-hour support,

however, since nursing homes have registered nurses on site 24 hours a day the cost can be considerably more than the cost of a residential care home.

## WHICH TYPE OF CARE HOME IS RIGHT FOR YOU?

Your choice between a residential care home or nursing home will depend on the level of care your loved one needs. You may already know the answer, but if not, you go for a needs assessment. In England, in accordance with the Care Act, local authorities have an obligation to assess everybody regardless of income, savings or whether the council thinks you will qualify. The assessment will identify your care needs - what kind of care you require and how much support you need. A social worker, occupational therapist, nurse or someone else working on the local authority’s behalf will carry out the assessment. Once the assessment is complete, your local authority will use the information to work out what care and support you may be eligible for and the best way for you to get it.

*About the Author: Helen Say is a freelance copywriter and blogger [www.cbllservices.co.uk](http://www.cbllservices.co.uk)*







## Homewood, Leamington Spa

### Residential care home

MHA is a charity with over 75 years' experience providing quality care and supporting families.

#### Situated in beautiful grounds, we offer:

- Long-term and respite care
- Personalised care in a safe environment
- En suite bedrooms and home cooked food
- A chaplain, hair salon and lots of activities

Get in touch for more information

**01926 423519**

**[www.mha.org.uk/homewood](http://www.mha.org.uk/homewood)**



Would you like the same honest, dependable & **AFFORDABLE** Police Checked\* cleaner to clean your home?

Typically  
**£15.95**  
per hour fully inc.

- All cleaners fully vetted in their own home
- Hundreds of Satisfied Clients Locally
- South Warwickshire's Premier House Cleaning Company

Ring **TODAY** on:  
**01926 825008**

Email: [warwick@uk.timeforyou.cleaning](mailto:warwick@uk.timeforyou.cleaning)  
Web: [www.timeforyou.cleaning](http://www.timeforyou.cleaning)



**Our Philosophy**

"We believe life is too short to spend it cleaning"

\*Police checked cleaners available on request.  
All promotions are subject to terms available at [www.timeforyou.cleaning](http://www.timeforyou.cleaning)



**MATHS TUTOR**  
Angelo Berté BA (Hons) PGCE

Offered by an experienced and qualified tutor.  
*Teach Maths from Key Stage 2 up to & including A-Level. DBS Checked.*

Structured learning  
Preparation for Entrance Exams  
Thorough knowledge of Exam Boards  
100% Pass Rates  
Mathematics for Adults: making a career change or returning to education

For an informal discussion please contact  
Angelo Berté BA (Hons) PGCE  
**01926 490579 | 07731 640281**  
[angeloberte@hotmail.co.uk](mailto:angeloberte@hotmail.co.uk)  
[angelobertemathstuition.com](http://angelobertemathstuition.com)



BRINDLEY  
TWIST  
TAFFT  
& JAMES SOLICITORS

**Solicitors for Individuals  
Solicitors for Business**

- Residential Conveyancing
- Wills
- Probate
- Lasting Powers of Attorney
- Family & Divorce
- Commercial Property
- Corporate & Commercial
- Employment Law
- Personal Injury
- Dispute Resolution
- Medical Negligence
- Notarial Services

Email:  
[enquiries@bttj.com](mailto:enquiries@bttj.com)

Visit:  
[www.bttj.com](http://www.bttj.com)

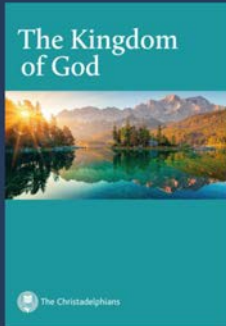
**61 Coton End  
Warwick  
CV34 4NU  
01926 499889**

We also have offices in Coventry,  
Balsall Common & Southam

# A NEW KING!

The UK celebrates the coronation of a new king in May 2023.

But Christians look forward to welcoming an even greater king, Jesus Christ. The Bible promises that this man, the Son of God, who died and rose again, will ultimately return to the earth. He will be the king of God's long-awaited Kingdom and rule over the whole world.



Find out more by ordering your copy of the booklet **'The Kingdom of God'** at [leamingtonchristadelphians.org](http://leamingtonchristadelphians.org) or text 07726 766525 with your name and address

Leamington Christadelphians

*Sharing the Good News in a world which really needs some*

## FAIRWAYS

LAWNMOWER & GARDEN  
MACHINERY REPAIR & SERVICE

LAWNMOWER & GARDEN  
MACHINERY SALES

BLADE SHARPENING

CYLINDER REGRIND

Umberslade Business Centre  
Pound House Lane, Hockley Heath,  
Solihull B94 5DF

**01564 773614**

[sales@fairwayslimited.co.uk](mailto:sales@fairwayslimited.co.uk)  
[www.fairwayslimited.co.uk](http://www.fairwayslimited.co.uk)



Does your child have

Anxiety

Anger Issues

Low Self Esteem

Challenging Behaviour

Stress

or

Struggle to Regulate Emotions?

Try Ollie Coaching  
For Children and Teens

★ **AWARD WINNING** ★

5 STAR REVIEWS ★★★★★ 5 STAR REVIEWS

Call Belinda:

01926 650 149 07485 120 444

or for a FREE SESSION visit:

[www.HelpMyChild.co.uk](http://www.HelpMyChild.co.uk)



# USEFUL LOCAL TELEPHONE NUMBERS

## MEDICAL

Warwick Hospital	01926 495321
Hampton Magna Surgery	01926 403800
St. Michael's Hospital	01926 406789
Priory Medical Centre	01926 293711
Claverdon Surgery	01926 842205
Nuffield Hospital	01926 427971
Coventry University Hospital	02476 964000
NHS Direct	111
Emergency Vets	01926 400255
Cruse Bereavement Care	0808 8081677

## POLICE

Non-Emergency Police Enquiries	101
Warwickshire Police	01926 415000
Leamington Police Station	01926 451111
Crimestoppers	0800 555111

## UTILITIES

Warwickshire Fire & Rescue	01926 423231
Electricity Power Loss	0800 6783105
Transco Gas Leak	0800 111999
Severn Trent Water	0800 783 4444
BT Fault Line	0800 800151
Emergency Drainage	01926 315485
Floodline	0845 9881188
RSPCA	0300 1234999

## LEISURE & SPORTS

St. Nicholas Park	01926 495353
Newbold Community Centre	01926 882083
Warwick Library	0300 5558171
Freedom leisure Warwick	01926 49977
Warwick School Sports Centre	01926 776466
Warwick University Sport	02476 523011

## TRAVEL

Chiltern Railways	0345 6005165
National Rail Enquiries	03457 484950
West Midlands Trains	0333 3110039
Bus Travel Line	0871 2002233
National Express	08705 808080
Coventry Airport	02476 308601
Birmingham Int' Airport	0871 2220072

## GENERAL

Tourist Information Centre	01926 492212
Citizen's Advice Bureau	01926457900
Samaritans	116123
Local Trading Standards	01926 414040
The Family Information Service	01926742274
Crematorium	01926 651418
Social Services	01926410410
Tax Credit Helpline	0845 3003900



**RAY'S**

**BUILDING AND LANDSCAPES LTD**

**PRIDE IN EVERY DETAIL  
SINCE 1985**

**W: [www.raypundsackbuilds.org](http://www.raypundsackbuilds.org)**

**W: [rpundsack@live.com](mailto:rpundsack@live.com)**

**T: 01926 810 772**

**M: 07449 581 930**



The difference is clear. Over 30 years of serving our customers has taught us that value is not just about price, it's also about gaining valued relationships. Working with our clients starts with detailed planning and a fair price, but equally working together to surpass expectation. Additionally, our clients have the advantage of a wealth of experience and skill that bridge all construction trades.

**FROM EXTENSIONS TO BATHROOMS OR KITCHENS TO LANDSCAPING:**

**WE DO IT ALL!**

**We look forward to hearing from you for a free consultation and quotation.**

**WE OFFER  
2 YEAR  
GUARANTEE  
ON ALL  
PROJECTS WE  
UNDERTAKE**

COMPANY REGISTERED IN ENGLAND & WALES NO: 11983174 VAT REGISTRATION NUMBER: 373525587

# Projects

## Paving & Landscaping



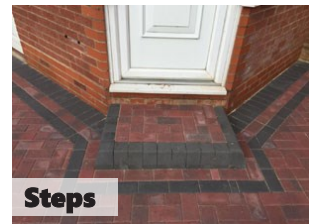
**Resin Drives**



**Tarmac Drives**



**Luxury Patios**



**Steps**



**Astro Turf**



**Block Drives & Paving**

- ✓ BLOCK DRIVEWAYS & PAVING
- ✓ RESIN DRIVEWAYS
- ✓ TARMAC DRIVEWAYS
- ✓ LUXURY OUTDOOR PATIOS
- ✓ STEPS TO FRONT DOORS
- ✓ DECORATIVE WALLING
- ✓ LANDSCAPING
- ✓ ASTROTURF
- ✓ FENCING

For a FREE, NO OBLIGATION quotation call:

**T: 01926 674 782 M: 07961 358 367**

**projectspaving@icloud.com**

**www.projectspaving.co.uk**

328 Alcester Road, Wythall, Birmingham B47 6JR



**S&S BUILDING  
& ROOFING**

- ✓ Fully insured
- ✓ Guaranteed
- ✓ Family run
- ✓ Local

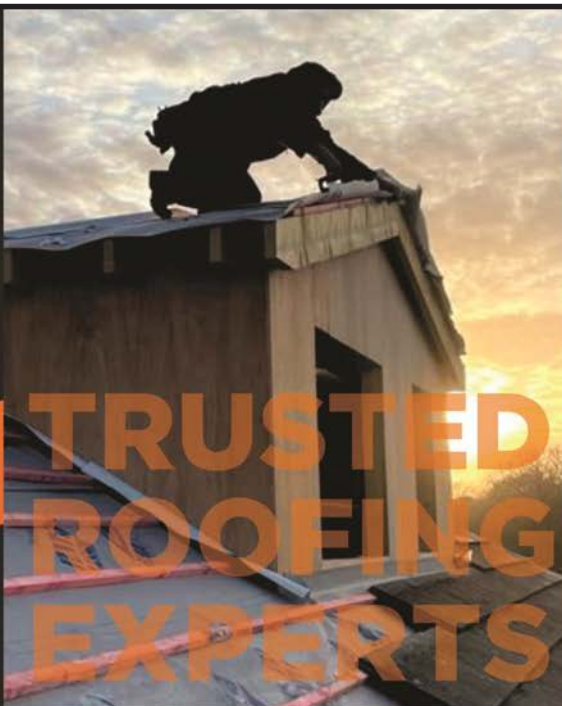
Payment only upon  
satisfactory completion  
of work



**Checkatrade**  
Where reputation matters



Search us on  
**Google**



- All aspects of roofing work undertaken
- Trained & qualified tradespeople
- Professional management team
- Excellent customer care
- A wealth of construction experience
- Industry accredited

**10 YEAR GUARANTEE**

\*Insurance backed guarantee available

Contact a member of our  
team today on:

T: **0121 809 5502**

T: **0800 433 2288**

M: **07541 936 357**

E: **bks@ssbuildingandroofing.co.uk**

W: **www.ssbuildingandroofing.co.uk**



**TRUSTMARK**  
Government Endorsed Quality





## CONSERVATORY ROOF REPLACEMENT

Every Ensign conservatory roof is bespoke. Accurately surveyed and precision built in our own factory.

- Large range of lightweight tile colours
- U-value 0.18 is better than current building regulations
- Keylite Roof Windows
- Electrics & Plaster Finish

## BUILD CONSERVATORY & ORANGERY EXTENSIONS

- Cost effective extensions
- Large range of designs
- LABC Approval Undertaken
- Average build time 4 weeks

## REPLACEMENT WINDOWS AND DOORS USING PROFILE 22 SYSTEMS

- Aluminium bi-fold doors
- Composite Doors
- Profile 22 Optima Systems
- Planitherm Technology
- Sealed Units for maximum efficiency
- High security locking systems



CALL TODAY TO BOOK YOUR **FREE**  
NO OBLIGATION SITE SURVEY  
**01527 69296**

[www.ensignroof.co.uk](http://www.ensignroof.co.uk)



Proud members of  
**Checkatrade.com**  
Where reputation matters





Proud members of  
**Checkatrade.com**  
Where reputation matters

**0121 7463044**  
**0800 3032559**  
**07773 911552**

**Laying Drives & Patios since 1979**



**5-YEAR GUARANTEE • NO UPFRONT PAYMENT • 100% SATISFACTION**

- ✓ TARMAC DRIVEWAYS
- ✓ BLOCK PAVING
- ✓ RESIN DRIVES
- ✓ COBBLESTONE PAVING & DRIVEWAYS
- ✓ CONCRETE IMPRINTING
- ✓ DAMP PROOF POINTING
- ✓ FENCING
- ✓ ROOFING

Please call us today for a FREE, NO OBLIGATION quotation:

**enquiries@drives4u.co.uk / www.drives4u.co.uk**

Please remember to mention Stonestrow Directories when calling



**From £895\***  
for a fully fitted electric garage door.

**Gotta get a Garolla.**

CE APPROVED

Trustpilot  
4.8 out of 5 (Over 3,000+ reviews)

Garolla garage doors are expertly made to measure in our own UK factories, they're strong and solidly built. The electric Garolla door rolls up vertically, taking up only 8 inches inside your garage, maximising valuable space. Our expert local installers will fit your new door and they'll take away the old one too, so there's no mess.

Give us a call today and we'll come and measure up FREE of charge.

**GAROLLA**  
ROLLER SHUTTER DOORS 

[www.garolla.co.uk](http://www.garolla.co.uk)

CALL US TODAY ON:

**01926 270 314**

MOBILE:

**07537 149 128**

LINES OPEN 7 DAYS A WEEK

\*Offer valid for openings up to 2.4m wide & including 2 remote controls, 55mm white slats, internal manual override.



# S J HOLT

QUALITY PAINTING & DECORATING

## FROM SMALL PAINT JOBS TO LARGE HOME RESTORATIONS

I provide professional painting and decorating services to domestic and commercial customers

For a FREE, NO OBLIGATION quote contact Sam Holt:

**07856 762 879**

**SJ\_HOLT@HOTMAIL.CO.UK**

**WWW.SJHOLTDECORATORS.CO.UK**

## S&S Building & Roofing

- NEW ROOFS
- GUTTER CLEANING
- SMALL & LARGE ROOF REPAIRS
- UPVC FASCIA & GUTTERING REPLACEMENT
- BUILDING PROJECTS
- EMERGENCY REPAIR WORK



- FLAT ROOFS
- LEAD WORK



T: 0800 433 2288 / 0121 809 5502

M: 07541 936357

E: [bks@ssbuildingandroofng.co.uk](mailto:bks@ssbuildingandroofng.co.uk)

W: [www.ssbuildingandroofng.co.uk](http://www.ssbuildingandroofng.co.uk)



## BEN TEBBY

TREE & LANDSCAPING SERVICES

### TREE SERVICES

- Tree Felling & Dismantling
- Crown Reduction & Thinning
- Pruning & Shaping
- Hedge and Shrub Trimming
- Stump Removal
- Logs & Wood Chipping for Sale
- Site & Garden Clearances

### LANDSCAPING

- Patios, Fencing & Turfing
- All aspects of landscaping

NPTC and City & Guilds qualified  
Fully Insured (5 million public liability)  
Friendly and reliable services



**07581 094528**

**[bentebby@hotmail.com](mailto:bentebby@hotmail.com)**



# WHAT'S ON LOCALLY

## **Warwick Market**

Date: every Saturday / Time: 9am - 3pm /  
Venue: Warwick Town Centre, Market Place,  
Warwick, CV34 4SA  
Warwick Market is a great opportunity to shop in a vibrant open-air setting, surrounded by many independent shops & cafes. On our Market, you will find variety and value, sold by new and experienced traders. You'll find stalls selling everything from fresh fruit and vegetables, plants and cut flowers, to fresh baking, fish and clothing, to gifts, & food specialities..

## **Recycle your old glasses**

Date: every 3rd Saturday / Venue: Warwick Saturday Market  
Warwick Lions would like to say a big thank you to all the people who have kindly donated old and broken spectacles to our stall at the Warwick Saturday Market. The glasses are cleaned & refurbished then sent to eye camps in Africa, India & Eastern Europe. We aim to collect redundant glasses on our stall every third Saturday.

## **Independent South Warwickshire NHS Retirement Fellowship**

Date: every 2nd Wednesday / Time: 10am - 12pm / Venue: All Saints Church Hall, All Saints Road Warwick CV34 5NJ

## **Stratford upon Avon Guild of Weavers, Spinners & Dyers**

Date: 3rd Saturday of the month / Time: 10am - 3pm / Venue: Stratford Methodist Church Hall, Old Town CV37 6BG

A friendly group, beginners welcome. Talks, workshops. See:

[www.wsdstratford.blogspot.com](http://www.wsdstratford.blogspot.com) Or:  
[www.wsdstratford@gmail.com](mailto:www.wsdstratford@gmail.com)

## **Warwickshire Vision Support Centre**

Date: 2nd Friday of each month / Time: 9.30am - 11.30am / Venue: Kenilworth Senior Citizens Club, Abbey End CV8 1LG

Warwickshire Vision Support are a local charity that supports people living with sight loss in Warwickshire. Web: [www.warwickshire.vision/](http://www.warwickshire.vision/)  
Email: [enquiries@warwickshire.vision](mailto:enquiries@warwickshire.vision)  
Phone: 01926 411331

## **Rapport Social Group**

Rapport is a non profit making, social group for unattached adults age 50+ on their own and would like to meet new friends. We have a varied monthly programme of hosted events, including coffee mornings, lunches and evening

meals, cinema, theatre and National Trust visits, day trips, walks and pub nights. For more information contact Jenny Brown on 07725 094123

## **Warwick Lions Club**

Warwick Lions aim to provide help and funds for those in need. We assist individuals and families in crisis, provide items of essential household equipment, distribute food parcels and make donations to local schools and other charities. We are all volunteers committed to helping those in need, we are non political, non religious, have no cultural boundaries or gender discrimination. If you would like to know more or to join us in helping others please contact us via our Facebook page or by telephoning 0345 833 5921.

## **Warwick Probus Club**

Date: 1st Wednesday of every month / Time: 10am / Venue: the Pavilion, Hill Close Gardens, Warwick, CV34 6HF  
Warwick Probus Club No.2 was formed to give retired and semi-retired business men the opportunity to expand their interests and make new friends over a cup of tea or coffee while being entertained by a guest speaker. We are always pleased to welcome new members. If you think that you may be interested in joining us call our Secretary James on 07581 578732.

## **Milverton Folk Dance Group**

Date: every Thursday / Time: 8pm - 10pm / Venue: Budbrooke Village Hall, Hampton on the Hill, CV35 8QS

We are a friendly folk dance club and welcome complete beginners, individuals or couples and equally those rekindling their knowledge. Come and give us a try if you would like to use your memory and be active! For more information, please contact us on 01926 334808 or 07866 961967, alternatively visit our website: [www.milvertonfolkdancegroup.org.uk/](http://www.milvertonfolkdancegroup.org.uk/)

## **Warwick Memory Singers**

Date: Wednesdays / Time: 1pm - 2.30pm / Venue: All Saints Church, Vicarage Fields, Warwick, CV34 5NL

Open to anyone living with dementia or other neurological condition, accompanied by their carer. Led by specially-trained musicians, our weekly sessions can help build new friendships and boost confidence, enabling people to feel more positive and supported. £5 per week, carers go free. First Session free! To book a place or for further information, please contact Sarah Riddell: [sriddell@armonico.org.uk](mailto:sriddell@armonico.org.uk) or call 07722 632242

## **Saturday Talks in Support of The Fusilier Museum**

Date: 29th of April / Time: 2pm  
'Who were the Royal Warwicks?' by Jonathan

Davy: explaining the massive growth of the B.E.F. during the First World War using the example of the Royal Warwickshire Regiment; who were these men and where they went to fight for King and Country. Date: 27th of May / Time: 2pm 'Animals in the Great War' by Alan Reed: looking at the variety of animals used in the First World War, the part they played in the war effort with some individual stories.

These will be on Zoom until further notice. To receive an invite, contact the Secretary by email on [rrfwarwickfriends@outlook.com](mailto:rrfwarwickfriends@outlook.com), about a fortnight before. All talks begin at 14.00 hours UK time and last about an hour.

#### **Bowling Coaching Sessions**

Date: 8th of May / Time: 6pm - dusk / Venue: Lillington Bowling Club, Lime Avenue, Lillington, Leamington Spa CV32 7DB

Our Monday night coaching sessions are open to all ages and abilities. There is no charge and we provide free coaching sessions. Flat shoes required. Please call Chris 01926881229 or John 07956487378

#### **Orchestra of the Swan presents: Into The Woods**

Date: 13th of May / Time: 3pm / Venue: Warwick Hall (Warwick School)

Three Little Pigs and Little Red Riding Hood - Two classic tales wickedly retold by author Roald Dahl. Narrated by Zeb Soanes (Classic FM) Tickets cost £15 and £5 for concessions. [www.bridgehousetheatre.co.uk](http://www.bridgehousetheatre.co.uk)

#### **The Arts Society, Royal Leamington Spa**

Knowledgeable lecturers entertain the audience once a month on a variety of topics, ranging from traditional to modern art-forms. For further details please visit our website at: [www.tasrsls.org.uk](http://www.tasrsls.org.uk)

#### **Kenilworth Over 30 Swimming Club**

Date: Every Sunday / Time: 8am - 8.55am / Venue: Newbold Comyn, Newbold Terrace East, Leamington Spa, CV32 4EW

We swim at Newbold Comyn whilst the Abbey Fields facility is being rebuilt. Only two members in each of the reserved four lanes to date - new members very welcome (£12.50 a month subscription) a great way to start your day! Please contact Simon Morton [simonmorton8@yahoo.co.uk](mailto:simonmorton8@yahoo.co.uk) for more details or a trial swim.

*While we do our best to ensure the accuracy of our listings, events may be postponed or cancelled without notice. Please confirm with the organiser before making any plans for attending events. For your news, events and group meetings to be featured free of charge on our What's On Page please email Ksenia: [info@stonestrowpublications.co.uk](mailto:info@stonestrowpublications.co.uk)*

## GET PAID TO GET FIT! JOIN OUR DELIVERY TEAM!



We Need You !!

We are looking for reliable, enthusiastic and energetic people to take on door to door deliveries once every 2 months.

Adults and kids over 13 years old.

Please enquire:

[INFO@STONESTROWPUBLICATIONS.CO.UK](mailto:INFO@STONESTROWPUBLICATIONS.CO.UK)

## FREE BEE FLOWER MIX GIVEAWAY

For your free bee mix please email your address to:

[stpdirectories@hotmail.com](mailto:stpdirectories@hotmail.com)

All we ask in return is to answer our email once every 2 months to confirm receipt of your copy of this magazine as part of our distribution checks.

(your email address will only be used for this purpose)





## ADEPT ACCOUNTING AND BOOKKEEPING SERVICE

A FRIENDLY SERVICE FOR SMALL  
AND MEDIUM SIZED BUSINESSES

PAYROLL AND AUTO ENROLMENT,  
BOOKKEEPING, VAT RETURNS,  
TAX RETURNS AND ANNUAL AND  
MANAGEMENT ACCOUNTS.

CALL JENNIE ON 01926 491348 OR 07816 233874

E: [adept.accounting@yahoo.com](mailto:adept.accounting@yahoo.com)  
Website: [www.adept-accounting.co.uk](http://www.adept-accounting.co.uk)

# S J HOLT

QUALITY PAINTING & DECORATING

## FROM SMALL PAINT JOBS TO LARGE HOME RESTORATIONS

I provide professional painting and decorating  
services to domestic and commercial customers

For a FREE, NO OBLIGATION quote contact Sam Holt:

# 07856 762 879

[SJ\\_HOLT@HOTMAIL.CO.UK](mailto:SJ_HOLT@HOTMAIL.CO.UK)  
[WWW.SJHOLTDECORATORS.CO.UK](http://WWW.SJHOLTDECORATORS.CO.UK)



## Aquarius Interiors Ltd Warwickshire's No.1 for Shutters and Awnings.



Russells Garden Centre, Mill Hill, Baginton, Coventry CV8 3AG. Tel: 024 7771 7517  
53, Abbey End, Kenilworth CV8 1QJ. Tel: 01926 359096

[www.aquariusinteriors.co.uk](http://www.aquariusinteriors.co.uk)

# CHARLES III

## LONG LIVE THE KING

As Prince of Wales, Charles has been preparing for this moment for most of his life, under the tutelage and guidance of his late mother, Elizabeth II. He will be recorded in history as the longest ever heir apparent, and the oldest to ever accede to the British throne at the age of 73.

Charles Philip Arthur George was born on 14th November 1948, during the reign of his grandfather King George VI. After the death of the King in 1952, his mother Elizabeth became Queen and Charles became heir to the throne at just three years old.

Charles was educated at Cheam and Gordonstoun schools, in the footsteps of his father Philip. He was the first heir apparent to attend school rather than receive private tuition. His time at Gordonstoun was hard, he referred to it as “Colditz in kilts” but later reflected, “...it taught me to accept challenges and take the initiative.” He left in 1967 with six O levels and two A levels in French and History. Charles went on to read Archaeology and Anthropology, then switched to History at Trinity College, Cambridge. He gained a 2:2 Bachelor of Arts in 1970. As Prince of Wales, he also spent a term at the University College in Aberystwyth, in order to study the Welsh language and history. In 1975, Cambridge University awarded him a Master of Arts.

Charles joined the Royal Air Force and trained as a jet pilot, then the Royal Navy, where he qualified as a helicopter pilot. The Prince’s Trust was founded in 1976 with the £7,500 severance pay from the Navy. Since then, Charles has established sixteen more charities which raise over £100 million annually.

In 1981, he married Lady Diana Spencer. They had two sons, William born in 1982 and Harry in 1984.

The couple divorced in



1996, and Diana was tragically killed in a car accident a year later.

In 2005, Charles married Camilla Parker-Bowles. The official title of Princess of Wales was never publicly acknowledged, instead Camilla became known as the Duchess of Cornwall.

The Duchy of Cornwall Estate was established by Edward III in 1337 for the heir to the throne. As Duke of Cornwall, the 53,000 hectare estate provided Charles with a private income to fund public, charitable and private activities, effectively making him financially independent. The estate passed to Prince William when he became heir apparent.

On 8th September 2022, Queen Elizabeth passed away peacefully and King Charles III became the new monarch. Coronation plans have been laid out for many years, under the codename ‘Operation Golden Orb’. It’s thought that the service will be smaller than the last coronation in 1953, and include different faiths and communities to reflect the change in British society. The Church of England ceremony will be broadcast internationally, and requires an oath and anointment, delivery of the orb and enthronement. The coronation of King Charles III and Camilla takes place in Westminster Abbey on 6th May 2023. Long live the King!



# HOROSCOPES: APRIL / MAY

## ARIES MARCH 21 - APRIL 20

Your ruler, dynamic Mars, remains in individualistic Aquarius until the 15th, you can use this time wisely by networking and interacting with totally new groups of people and business colleagues. Your earning ability increases as Mercury arrives in Taurus on the 11th, innovative new opportunities to influence your work progress are coming your way. May is a super energetic month for you, starting with Venus arriving in your sign on the 3rd, followed by Jupiter on the 11th and finally Mars on the 25th. You'll feel this huge energy shift as your plans and projects gather momentum and new ideas become apparent. The Scorpio full moon eclipse on the 16th suggests that some important financial issues will come to the surface.

## TAURUS APRIL 21 - MAY 21

Abundant Jupiter in Pisces brings enhanced intuition and renewed confidence and courage when it comes to making new friends. Your talents are in the spotlight and you'll need to take stock and review your options as your innovative ideas can now become reality. Venus arrives in dreamy Pisces on the 6th, perfect timing for romance to blossom! May: Communicative Mercury has just arrived in Gemini, illuminating the communication area of your chart. It's time to profit from a new sense of resolve when it comes to getting things done, try to make your decisions before Mercury turns retrograde on the 10th. It's time to let go of outmoded situations and discover inspirational new ways forward.

## GEMINI MAY 22 - JUNE 21

Dynamic Mars arrives at the highest point of your chart on the 15th, this is your cue to shift gear and turn up the pace. Your finances are a high priority and you should have more than one new money making idea up your sleeve. The full moon in Libra on the 16th suggests a creative opportunity could be coming your way. May: Mercury, your ruler, has just arrived in your sign offering up an exciting theme of innovative ideas and exciting new plans to help you move ahead. Try to get things done before the retrograde phase begins on the 10th. The powerful Scorpio full moon eclipse on the 16th illuminates a challenge around an ambitious project, access your intuition for best results

## CANCER JUNE 22 - JULY 22

The powerful Aries new moon on the 1st offers up some new and innovative opportunities concerning your career goals, if you have been holding yourself back, now is the time to stride forth and be courageous. Domestic matters also get the go ahead after the Libra full moon on the 16th, any recent setbacks and delays should start to ease. May: This month indicates that a totally different dynamic is on offer as your career moves into the spotlight. Jupiter arriving in Aries on the 11th places your confidence at an all-time high and pushes you even harder to go after what you want. A close friend offers you some good advice around the time of the Gemini new moon on the 30th, try to be open to suggestions.

## LEO JULY 23 - AUGUST 23

During April your overall wellbeing is firmly in the spotlight, the Aries new moon on the 1st kick-starts your energy urging you to take time out for study, adventure and travel. Broadening your horizons is definitely the theme for the next month as you tune into your needs and make the necessary changes. May begins by offering a chance to clear up any emotional matters that have been in the background for some time. After the 11th, as mighty Jupiter changes sign, your thoughts turn to further broadening your horizons and travelling to some faraway places. The Scorpio full moon eclipse on the 16th illuminates your domestic area and a deep friendship could become especially rewarding for you.

## VIRGO AUGUST 24 - SEPTEMBER 22

April arrives with a much clearer picture of your way forward; energetic Mars in Aquarius offers the dynamic energy to capitalise on professional matters, as people around you will be very receptive to your ideas and plans. The powerful full moon in Libra on the 16th suggests that money matters may require careful handling. May: Pisces energy is strong at the start of the month, illuminating the relationship sector of your chart. Your intuition should be at its height, but you will need to avoid wasting energy on trivia as Mercury in Gemini is so easily distracted. The Scorpio full moon on the 16th in your financial area offers a more practical approach to enhance your earning potential.

## LIBRA SEPTEMBER 23 - OCTOBER 23

The important full moon in your sign on the 16th illuminates your ability to be successful and shows the need for you to find a good balance and a positive outlook in all areas of life. As dynamic Mars enters Pisces on the 15th, the emphasis is on your health and wellbeing, good nutrition, rest and relaxation are more important than ever. May: Your overall health and wellbeing continue to be illuminated this month as the intuitive sign of Pisces is strongly emphasised in your chart. Take this opportunity to further develop any new health strategies as this is the perfect time to make some lasting changes. The Scorpio full moon on the 16th suggests new financial insights are ready to be uncovered.

## SCORPIO OCTOBER 24 - NOVEMBER 22

April's planetary activity turns your attention to work related matters. The powerful Aries new moon on the 1st offers some exciting new prospects, making this the perfect time for success. After the 6th, relationship planet Venus arrives in enchanting and sensitive Pisces – very well positioned to enhance love and romance! May: The full moon in your sign on the 16th confirms the important decisions that you have taken in recent months, step back and enjoy your success! Work related issues are on a roll as new projects coincide with your determination to succeed. The new moon in Gemini on the 30th highlights a financial issue that needs addressing.

## SAGITTARIUS NOVEMBER 23 - DECEMBER 21

Work and lifestyle issues are in the spotlight this month, you'll feel drawn to finding a better balance in these areas. Creativity should also be at a peak as Mars is innovative and resourceful in Aquarius. A much higher profile leads you to being in the right place at the right time, particularly around the full moon on the 16th. May: Your love life enters the spotlight after the 3rd as romantic Venus arrives in passionate Aries and lights up this area of your chart. Relationships should flourish under these current trends and Jupiter, your ruler, is beneficial after the 11th. Mercury in Gemini ensures that you stay curious and explore, but try to avoid arguments.

## CAPRICORN DECEMBER 22 - JANUARY 20

During April the emphasis is on all forms of communication; Abundant Jupiter and mystical Neptune are both in intuitive Pisces, giving you the gift of insight wherever it is most needed. An added boost comes from the powerful Aries new moon, allowing you to firm up your strategy for any career expansion that you have in mind. May brings a new sense of adventure and exciting new possibilities as your communication sector is illuminated and you have plenty to say. The Sun and impulsive Uranus also occupy pivotal positions in your chart, ensuring that you enjoy popularity and recognition; use positive thinking to get the very best out of any new social endeavours.

## AQUARIUS JANUARY 21 - FEBRUARY 18

Under the current planetary trends, ideas and communication around all aspects of your earning potential continue to occupy the spotlight. Dynamic Mars remains in your sign until the 15th, be sure to make the most of this powerful energy for multiple creative ideas. The Taurus new moon on the 30th brings a longstanding domestic issue to the forefront. During May your home becomes one of your top priorities, if you maximise your potential and put your powers of judgement to the test you should see the successful culmination of an ambitious project. Venus arrives in Aries on the 3rd, enthusiasm is high as love and relationships offer excitement and delight.

## PISCES FEBRUARY 19 - MARCH 20

Your breakthroughs arrive as you start to view events from an entirely new perspective. The powerful Aries new moon on the 1st suggests innovative and beneficial change will be coming your way very soon. Venus arrives in your sign on the 6th, joining Jupiter and Neptune and kick-starting your desire to make some important changes. May: Energetic Mars moves out of your sign and into Aries on the 25th, offering you the opportunity for renewal and clearing out. Venus is passionate in lively Aries from the 3rd suggesting that you have supercharged energy for ridding yourself of anything that is not essential in your life, even if it requires some serious soul searching.

Christine Chalklin, Inspirational Astrologer and Life Coach.

Take a refreshing new look at the year ahead by booking an astrological reading now - Consultations are available on Skype, Zoom, WhatsApp or telephone. Mobile: 07813 483549 | [www.restyleyourlife.co.uk](http://www.restyleyourlife.co.uk) | [christine\\_chalklin@hotmail.com](mailto:christine_chalklin@hotmail.com)



Local   
Reliable   
Trusted



## CROWN Driveways & Patios

Limited time offer: Winter Discounts

- Patios
- Driveways
- Tarmac
- Block Paving
- Resin Drives
- Entrance Pattern
- Drainage
- Wall & Steps
- Fencing & Gates
- Landscaping



Call us for a FREE,  
NO OBLIGATION Quotation:

**0121 746 3028**

**07786 300 839**

Serving Warwick & surrounding areas

[www.crowndriveways.co.uk](http://www.crowndriveways.co.uk)

# RESTAURANTS

## & TAKEAWAYS

### **Unicorn Warwick** *Gastropub*

64 Hardwick Field Lane CV34 6LN  
**01926 402860**

### **The Racehorse** *Gastropub*

34 Stratford Rd CV34 6AS  
**01926496705**

### **Shakespeare Fish Bar** *Fish & Chips*

28 Shakespeare Avenue CV34 6JR  
**01926 257003**

### **Panda House** *Chinese Takeaway*

36 Shakespeare Avenue CV34 6JR  
**01926 741004**

### **The Chip Shed** *Fish & Chips*

24 West Street CV34 6AN  
**01926 498014**

### **Paw Paw** *Chinese Takeaway*

40 West Street CV34 6AN  
**01926 492886**

### **The Globe** *Hotel Restaurant*

10 Theatre Street CV34 4DP  
**01926 479100**

### **The Rose & Crown** *Gastropub*

30 Market Place CV34 4SH  
**01926 411117**

### **Masala Knights** *Indian*

20 Market Place CV34 4SL  
**01926 403413**

### **The Eagle** *Bar*

3 The Holloway CV34 4SJ  
**07765 896155**

### **Totally Thai** *Thai*

16 Market Place CV34 4SL  
**01926 496187**

### **Tailors** *Gastropub*

22 Market Place CV34 4SL  
**01926 410590**

### **Market Place Pantry** *Café*

26 Market Place CV34 4SJ  
**01926 400580**

### **The Thomas Lloyd** *Pub*

3-7 Market Place CV34 4SA  
**01926 475690**

### **The Square Warwick** *Bar*

9A Market Place CV34 4SA  
**01926 730550**

### **Tilted Wig** *Gastropub*

11 Market Place CV34 4SA  
**01926400110**

### **The Tuckery** *Café*

21 Market Place CV34 4SA  
**01926 492171**

### **Wylie's Café** *Tea Room*

66A Market Place CV34 4SD  
**01926 490448**

### **Dough and Brew** *Pizza*

45 Brook Street CV34 4BL  
**01926 401111**

### **Saffron Gold** *Indian*

Westgate Close CV34 4DE  
**01926 402061**

### **7 Square Restaurant** *French*

7 Old Square CV34 4RA  
**01926 411755**

### **The Art Kitchen** *Thai*

7 Swan Street CV34 4BJ  
**01926 494303**

### **ASK Italian** *Italian*

16/18 High Street CV34 4AP  
**01926 941006**

### **Coffee#1 Warwick** *Café*

22-24 High Street CV34 4AP  
**01926 419187**

### **Giggling Squid** *Thai*

1-3 High Street CV34 4AP  
**01926 497542**

### **Jambavan** *Indian*

6 Castle Street CV34 4BP  
**01926 496511**

### **Thomas Oken** *Tea Room*

20 Castle Street CV34 4BP  
**01926 499307**

### **Tasca Dali** *Spanish*

15 High Street CV34 4AP  
**07445 223527**

### **Aqua Food & Mood** *Lebanese*

12-14 Jury St, CV34 4EW  
**01926 495491**

### **Pizza Express** *Pizza*

33-35 Jury St, CV34 4EH  
**01926 407895**

### **La Mesa** *Fusion*

5B Old Square, CV34 4RA  
**07528 080151**

### **Gateway** *Café*

4 Smith St, CV34 4HH  
**01926 419393**

### **Warwick Spice** *Indian & Bangla-*

*deshi* 24 Smith St, CV34 4HS  
**01926 491736**

### **The Pickled Crab** *Seafood*

15 Smith St, CV34 4JA  
**01926 494904**

### **The Aubergine** *Turkish*

32 Smith St, CV34 4HS  
**01926 400086**

### **Il Piccolinos** *Italian*

31 Smith St, CV34 4JA  
**01926 491020**

### **Love Bread & Co** *Café*

60 Smith St, CV34 4HU  
**01926 493089**

### **The Roebuck Inn** *Pub*

57 Smith St, CV34 4HU  
**01926 494900**

### **The New Bowling Green** *Pub*

13 St Nicholas Church St, CV34 4JD  
**01926 411470**

### **Dominio's Pizza** *Pizza*

21 St Johns, Coventry Rd, CV34 4NE  
**01926 411003**

### **The Oak** *Pub*

27 Coten End, CV34 4NT  
**01926 493774**

### **Pasteleria Portuguesa** *Bakery / Café*

57 Coten End, CV34 4NU  
**01926 475871**

### **The Black Pug** *Pub*

69 Coten End, CV34 4NU  
**01926 730496**

### **The Railway Inn** *Pub*

55 Guy St, CV34 4LW  
**01926 493725**

### **The Wild Boar** *Pub*

27 Lakin Rd, CV34 5BU  
**01926 499968**

### **The Elephant & Castle** *Pub*

105 Emscote Rd, CV34 5QY  
**01926 774078**

### **Rivercross** *Indian*

204 Emscote Rd, CV34 5QT  
**01926 734086**

### **The Cape Of Good Hope** *Gastropub*

66 Lower Cape, CV34 5DP  
**01926 498138**

### **Woodloes Park Fish Saloon**

*Fish & Chips*  
8 Reardon Ct, CV34 5RN  
**01926 495666**

### **Welcome Chinese Takeaway** *Chinese*

Reardon Ct, CV34 5RN  
**01926 403933**

### **The Saxon Mill** *Gastro Pub*

Coventry Rd, Guys Cliffe, CV34 5YN  
**01926 492255**

### **The Old Post Office** *Pub*

12 West Street CV34 6AN  
**07717140834**

### **Chopsticks** *Chinese*

19-21 Smith Street CV34 4JA  
**01926 479188**

### **St. John's Fish Bar** *Fish & Chips*

31 St Johns CV34 4NE  
**01926 493727**

### **Great Wall** *Chinese Takeaway*

65 Coten End CV34 4NU  
**01926 494938**

### **Castle Kebab** *Kebab Shop*

46B Salfisford CV34 4TD  
**01926 491010**

### **Apple Tree Tearooms** *Tea Room*

5A Old Square, CV34 4RA  
**01926 289365**



# Heritage

DRIVES & LANDSCAPES LTD



## Driveways & Landscapes In Warwickshire

Professional Driveway & landscaping company based in Solihull, working throughout Warwickshire, Coventry, Kenilworth & surrounding areas.



### We pride ourselves on our high standards of workmanship

BLOCK PAVING | TARMACING (red & black) | PATIOS | RESIN | BRICKWORK SLABBING | GRAVEL | FENCING LANDSCAPING | PROPERTY & ROOF REPAIRS | DRIVEWAY MAINTENANCE (Pressure cleaning & sealing - weed free)

[www.heritagedrivesandlandscapes.co.uk](http://www.heritagedrivesandlandscapes.co.uk)

Sunnyside, Kenilworth Road, Hampton in Arden B92 0LW



 02476 014 131

 07377 534 460



[heritagedrivesltd@gmail.com](mailto:heritagedrivesltd@gmail.com)

# FEATURED KITCHEN

HADDON IN MALLARD GREEN AND FRENCH GREY.

NOW ON DISPLAY IN OUR WARWICK SHOWROOM



BURBIDGE & SON

EST. 1867

**KITCHEN MAKERS™**

**RFK**  
**KITCHENS**

RFK Warwick, 47 Coten End, Warwick, CV34 4NT

Tel: 01926 419165

[www.rfkkitchens.co.uk](http://www.rfkkitchens.co.uk) | [sales@rfkkitchens.co.uk](mailto:sales@rfkkitchens.co.uk)

**CALL NOW TO BOOK DESIGN CONSULTATION**

# Window & Door Repairs & New Installations



**GREAT SERVICE &  
QUALITY WORKMANSHIP  
GUARANTEED**

- Misted/Steamed Up Windows
- Broken Glazing
- Broken Hinges, Handles & Locks
- Poorly Fitting Windows & Doors
- Locks Fixed
- New Windows & Doors

**(UPVC ~ Aluminium ~ Timber ~ Composite)**



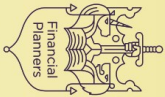
Call Paul at HomeSeal today for your  
**FREE NO OBLIGATION QUOTATION:**

Tel: **024 7646 6260**

Mob: **07976 710463**

[www.homesealimprovementsltd.co.uk](http://www.homesealimprovementsltd.co.uk)

Pension  
**TRANSFER**  
Gold Standard



Chartered

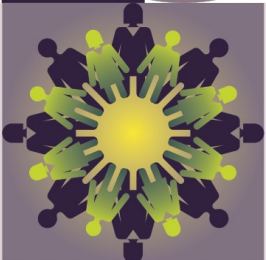


# JAMIESON CHRISTIE CHARTERED FINANCIAL PLANNERS

## TIME FOR A CHANGE?

Talk to us about a review of your previously transferred pension benefits plus

- Retirement planning and pension consolidation
- Tax efficient investing including business sales and inheritance
- Socially responsible investing for growth and/or income
- Inheritance tax and estate planning



**Contact us to learn how we can help.**

Head Office: Regent House, 430-432 Kenilworth Road,

Balsall Common CV7 7DN

Telephone 01676 532210 / 03300 505040

mail@jamiesonchristie.com / www.jamiesonchristie.com

Serving our clients nationwide with offices in London, East Midlands and Staffordshire.

Authorised and regulated by the Financial Conduct Authority.

**Tailored financial planning.**

**For now, for the future.**



Google  
Customer Reviews  
★★★★★